

# Oklahoma School Testing Program (OSTP) & College and Career Readiness Assessments (CCRA)

---

*Kiosk Installation Guide*

*Spring 2018*



Measured Progress is a registered trademark of Measured Progress, Inc. The Measured Progress logo is a trademark of Measured Progress, Inc. All rights reserved.

© 2018 eMetric, LLC. This document, including any and all attachments, contains the proprietary and confidential information of eMetric. It is not to be distributed to any party without the explicit written consent of eMetric.

iTester is a registered trademark of eMetric LLC.

# Contents

<b>Introduction .....</b>	<b>5</b>
Purpose.....	5
Technical Support .....	6
<b>OSTP Kiosk .....</b>	<b>7</b>
Student Testing Device Requirements .....	7
<b>Testing Environment .....</b>	<b>8</b>
Testing Environment Setup.....	8
Network Connectivity .....	8
Bandwidth .....	9
Thin-Client Environments.....	10
Monitor Settings .....	10
Spanish Language Support .....	11
Language pack .....	11
Language Settings.....	11
Default Voice Settings for Text-to-Speech Accommodations.....	12
Disable Touch Settings for Third-Party Software .....	12
<b>Windows® Kiosk Installation .....</b>	<b>13</b>
Set up your building testing environment.....	13
Download the OSTP Kiosk.....	13
Install the downloaded kiosk.....	14
Windows® MSI Package Scripted Installation .....	18
Script Examples .....	18
Windows® MSI Package Installation via Group Policy.....	19
Windows® Network Kiosk Installation .....	19
<b>Mac Kiosk Installation .....</b>	<b>20</b>
Set up your building testing environment.....	20
Download the OSTP Kiosk.....	20
Install the downloaded kiosk.....	21
Disabling Universal Clipboard .....	24
<b>Linux® Kiosk Installation .....</b>	<b>25</b>
Set up your building testing environment.....	25
Download the OSTP Kiosk.....	25

---

Install the downloaded kiosk .....	26
<b>iPad Application Installation .....</b>	<b>30</b>
Download the OSTP app from the Apple App Store.....	30
Automatic Assessment Configuration .....	30
<b>Chromebook™ Application Installation .....</b>	<b>31</b>
Managed Chromebooks™ .....	31
Non-Managed Chromebooks .....	33
Managed Chromebooks™: Turn off auto-update .....	36
<b>Site Readiness Test and Site Certification .....</b>	<b>38</b>
Purpose.....	38
Site Readiness Testing .....	38
Find the Site Readiness account information.....	38
Authenticate every device or device configuration to be used for testing .....	39
Site Certification .....	45

# Introduction

## Purpose

This document is intended for technology personnel responsible for setting up the Oklahoma School Testing Program (OSTP) and the College Career Readiness Assessments (CCRA) online-testing environment in participating districts and buildings.

There are two components of the OSTP & CCRA online testing: the online **portal**, used by building and district administrators, and the **kiosk**, used by students for testing. This document contains instructions for installing the iTester™ OSTP & CCRA Kiosk and conducting site readiness testing on devices used for online testing.

**Note:** the Oklahoma School Testing Program Kiosk is a version of the iTester student testing kiosk application that has been tailored for the Oklahoma School Testing Program. Some technical documentation may refer to the Oklahoma School Testing Program Kiosk as iTester.

For more information on working with the online portal, see the *OSTP Portal User Guide*, which is available on the OSTP Help & Support page:

<http://oklahoma.onlinehelp.measuredprogress.org/guides/>

To install and set up the kiosks for your building:

1. Review the [student testing device requirements](#) to ensure that you have the correct equipment for student testing.
2. If you have a previous installation of the OSTP app on your iPads or Chromebooks, update the app if you do not have auto-update turned on.
3. Configure your [testing environment](#) to support student testing on the kiosk.
4. Download and install the appropriate kiosk to each student testing device:
  - [Windows®](#)
  - [Mac®](#)
  - [Linux®](#)
  - [iPad® application](#)
  - [Chromebook™ application](#)
5. Complete the [Site Readiness tests](#), which performs a system set-up check and provides a testing simulation scenario for each device or device configuration.

**Tip:** To ensure that the testing environment is ready for students on time, we recommend that you run the Site Readiness tests directly after installing the device kiosks.
6. When all of the configurations to be used for student testing are ready, [certify your site](#) for student testing.

## Technical Support

If you experience any difficulty downloading or installing the OSTP Kiosk, contact the Measured Progress Service Desk at [oktechsupport@measuredprogress.org](mailto:oktechsupport@measuredprogress.org) or call (866) 629-0220.

For questions about the test administration or other technical information, contact:	For questions or information regarding OSTP policy and testing procedures, contact:
<b>Measured Progress Service Desk</b>  Toll Free: 1 (866) 629-0220 Email: <a href="mailto:oktechsupport@measuredprogress.org">oktechsupport@measuredprogress.org</a>	<b>Oklahoma State Department of Education Office of Assessments</b> Phone: 1 (405) 521-3341 Website: <a href="http://sde.ok.gov/sde/office-assessments">http://sde.ok.gov/sde/office-assessments</a>

# OSTP Kiosk

The OSTP Kiosk refers to the student interface used for online testing both the Oklahoma School Testing Program and College Career Readiness Assessments. The kiosk is a cross-platform, rich Internet application that employs the industry’s highest standards in security, reliability, and usability for high-stakes assessment. The kiosk runs seamlessly on Windows, Mac, and Linux operating systems, iPads, with and without external keyboards, and devices such as Chromebooks.

## Student Testing Device Requirements

It is important to set up the testing environment in accordance with the student testing device requirements to ensure a proper setup for your students. The following table lists the recommended system requirements for student test devices used in online testing:

System Requirements – All Hardware	
Connectivity	Student devices must be able to connect to the internet via wired or wireless networks
Screen Size	9.7” screen size or larger/ “10-inch class” tablets or larger
Screen Resolution	1024 x 768 or larger
Browsers (Used for Practice Test <a href="#">ONLY</a> )	Chrome™ 64 or newer <sup>a</sup> Firefox® 56 or newer <sup>a</sup> Safari® 9 or newer <sup>a</sup> Internet Explorer® 11 Microsoft Edge™ 40.15 or newer
Headphone/Earphone/Ear Buds	Headphones/earphones/ear buds are required for students who have a text-to-speech accommodation
Desktop and Laptop Specific Requirements	
CPU	1.2 GHz
Memory	2 GB
Input Device	Keyboard – wired or wireless/Bluetooth® enabled mouse or touchpad
Windows® operating system	Windows® 7, 8.1, and 10 Version 1703 (32-bit and 64-bit)
Mac OS® operating system	10.9 – 10.13 (64-bit only)
Linux® OS	Ubuntu® 14.04.5 LTS, 16.04.1 LTS (64-bit only) Fedora™ 25, 26 (64-bit only)
Tablet/Netbook/2-in-1 Specific Requirements	
iPad®	11.2.5 <sup>a</sup>
Chromebook™ notebook computer	Chrome OS™ 61-63 <sup>a</sup>

Windows®-based tablets/netbooks/2-in-1	Windows® 8.1, 10 <sup>b</sup> (32-bit and 64-bit)
--	---

<sup>a</sup> As new operating system and browser versions are released, eMetric will update technology guidelines following successful compatibility testing.

<sup>b</sup> Windows 10 S is not supported.

iTester identifies third party applications that may cause interruptions during online test administration. Users will be required to close these prior to logging into iTester. There may be additional third-party applications not currently identified by iTester that can cause interruptions or interfere with the kiosk functionality. To minimize potential security issues and interruptions introduced by these applications, we recommend disabling such third-party applications from the devices prior to conducting the operational test.



**Note:** students testing on devices with only the minimum specifications are more likely to encounter performance-related issues.

## Testing Environment

The testing environment for a building is installed and set up by an Assessment Technology Coordinator (ATC) or by a District Test Coordinator (DTC) or Building Testing Coordinator (BTC) acting as an ATC.

### Testing Environment Setup

The kiosk can be installed on the network or on an individual testing device. The advantages and disadvantages for each are listed in the table below.

**Note:** We highly recommend a local installation to avoid network connection issues.

	Individual device installation	Network installation
<b>Advantages</b>	No impact on LAN traffic during initial application launch.	Time spent on application installation and configuration would be considerably less. Centralized location for application updates and configuration.
<b>Disadvantages</b>	Time spent on application installation and configuration would be considerably more.	Downloading of the application from the network folder to the test taker's device could introduce single point of failure during application launch. Initial application launch could be delayed depending on the LAN traffic and bandwidth.

### Network Connectivity

All devices used for student testing should have access to the Internet and should be able to access the servers using HTTP/HTTPS protocols on ports 80 and 443.

1. Whitelist the following sites on ports 80 and 443 in content filtering proxies or other locally used proxy software:



- <https://oklahoma.measuredprogress.org>
- <http://oklahoma.measuredprogress.org>
- [fonts.googleapis.com/](https://fonts.googleapis.com/)
- [themes.googleusercontent.com/](https://themes.googleusercontent.com/)
- [googleusercontent.com/](https://googleusercontent.com/)
- <https://cognito-identity.us-west-2.amazonaws.com>
- <https://cognito-identity.us-east-1.amazonaws.com>
- <https://eventsapi.emetric.net/okprod/router>
- \*.newrelic.com
- bam.nr-data.net
- app.getsentry.com
- js-agent.newrelic.com

**Important:** If you have previously allowed these sites by IP address, oklahoma.measuredprogress.org has changed its location and will need to be re-whitelisted.

2. If you are working with sandboxing applications (such as Faronics Deep Freeze™), do one of the following while installing the kiosk:

- Choose network folder location for local caching.
- Make sure the default location, such as C:\Users\user\AppData\Local\EMetric (%localappdata%\emetric) and its contents are not deleted by these applications.

**Note:** Student-testing data, including encrypted responses, will be saved to the indicated location only if the network connection or Internet connection is lost during the test. Students will be able to continue testing without interruption, but their testing data will be saved in the indicated folder.

3. Evaluate the type of installation for your building:

- We recommend that buildings with an Internet download speed of less than 1.5 Mbps stagger students starting the test.

## Bandwidth

The ability of a school's network to support a given volume of on-line test takers is a function of the available bandwidth between the student's test device and the data center serving the test content, the number of students who will be downloading tests, and size of the test content. The [Site Readiness](#) test's Connection Capacity test will measure the bandwidth between a student's test device and the data center and determine the volume of tests that can be downloaded simultaneously. Use the results of this test to gauge the impact your bandwidth will have on testers.

Additionally, the bandwidth necessary for a certain number of students to test simultaneously (defined as actually clicking "Continue" simultaneously as that is what triggers the test content to download to the students' devices), will depend on the size of the actual operational forms. We adjust our bandwidth tests to calculate using the average form session size (which we

expect will be 3 MB or less). We optimize our system and the content itself to be as streamlined and light weight as possible.

## Thin-Client Environments

When using thin-client environments, such as Terminal Services, Citrix®, or LTSP®, make sure that there is enough memory, CPU, and bandwidth on the server to accommodate multiple student test sessions. The application requires a minimum of 80 MB of memory per client session and can vary depending on the size and type of the test. Allowing multiple sessions on an improperly sized thin-client environment will lead to poor performance.

Additionally, schools using thin clients need to be cautious when there is 1 GB or less of physical memory on the student testing device. In this case, we highly recommend that you use a local installation. As a general rule, if you can use Chrome™ browser to access web based email or web based streaming services on all student testing devices simultaneously, then testing should go well.

In thin-client environments, the accounts students use to log in to the student testing devices must be unique for each student. Also, each account must have its own dedicated user profile.

**Note:** If kiosks in your thin-client deployment experience performance issues, such as graphics not rendering, fuzzy screens, or screen flickering, we recommend disabling hardware graphics acceleration.

For assistance, contact the Measured Progress Service Desk at [oktechsupport@measuredprogress.org](mailto:oktechsupport@measuredprogress.org) or (866) 629-0220.

## Monitor Settings

Ensure that all monitors used for testing are set to the default color settings. If a student requires a zoom accommodation, review the recommended screen resolutions in the table below.

Required Zoom Level for Student	Recommended Screen Resolution
100% (No Zoom)	1024 x 768 (or higher)
150%	1920 x 1080 (or higher)
200%	1920 x 1080 (or higher)
300%	1920 x 1080 (or higher)

**Note:** These are only recommended screen resolutions. Use the screen resolution you feel the student would be most comfortable with.

The student or proctor may set the zoom level within the kiosk when the student logs in using his or her unique user name and password at the time of testing.

## Spanish Language Support

The OSTP online test administration is also available in Spanish.

The Spanish Text-to-Speech version of the tests are not available on iPads, or other mobile devices, but is supported on the following systems:

- Windows®: Windows 7, 8.1, and 10
- Macintosh: OS X 10.9 — 10.12

### Language pack

The Spanish version of the test uses the Text-To-Speech accommodation, which requires a Cepstral Spanish language pack to be installed on the machine where the test will be taken.

**Important:** Licensing of this language pack is limited; so, plan to cycle the students with this accommodation through your testing space to avoid the need for multiple installations of this language pack.

**Note:** For assistance on obtaining Cepstral licenses, contact Measured Progress Service Desk at [oktechsupport@measuredprogress.org](mailto:oktechsupport@measuredprogress.org) or call (866) 629-0220.

### Language Settings

To ensure the log in screen, navigation buttons and on-screen prompts are all in Spanish. You will change the OSTP Kiosk to the Spanish Language version.

1. Launch the OSTP Kiosk
2. On the Sign in Screen select Español from the localization drop down list at the bottom of the page.


You can also set up your language preferences manually on Windows and Mac workstations.

#### *Windows workstations*

1. From the **Control Panel**, click **Clock, Language, and Region**, and then click **Region and Language**.

Note: The Control Panel commands may differ slightly depending on which version of Windows you are using.

2. On the **Formats** tab, from the Format drop-down list, select **Spanish (United States)**. Click **Apply** and then click **OK**.

 If you are prompted for an administrator password or confirmation, type the password or provide confirmation.

3. To change the keyboard setting, on the **Keyboard and Languages** tab. On the General tab, click **Change keyboards**, and then select **Spanish (United States)**. Click **Apply**, and then click **OK**.
4. To restart your computer, click **Restart now**.

#### *Mac workstations*

1. Choose **Apple menu > System Preferences**, then click **Language & Region** or **International**.
2. In the **Language** tab, choose **Spanish**.
3. In the **Region** menu, choose **United States**.
4. When you are done customizing formats, click **OK**.

## Default Voice Settings for Text-to-Speech Accommodations

The voice used by the OSTP Kiosk for text-to-speech is the voice set as the default on the device the student is using for testing. Ensure that the desired voice is set as the default for the operating system installed on the device.

To update the default voice for Windows® 7 and 8.1:

1. Click the **Start** button. (Right-click the **Start** button if using Windows® 8.1 touch)
2. Click **Control Panel**.
3. Click **Ease of Access**.
4. Click **Ease of Access Center**
5. Click **Use the computer without a display**.
6. Click **Set up Text to Speech**.
7. Click the voice you want to use in the **Voice Selection** box.

To update the default voice for Windows® 10:

1. Click the **Windows®** button.
2. Click **Settings**.
3. Click **Time & Language**.
4. Click **Speech** under the time & language menu on the left side of the screen.
5. Select the voice you want to use in the **Voice Selection** box.

To update the default voice for Mac 10.9-10.12:

1. Click **System Preferences**.
2. Click **Speech** or **Dictation & Speech**.
3. Click **Text to Speech**
4. Select the voice you want to use in the **System Voice** box.

**Note:** Text-to-speech is not supported on Linux® devices.

## Disable Touch Settings for Third-Party Software

The sketch & highlight tool is not available if third-party software with touch settings is installed on the student workstation. Please see the third-party software help guide for steps to disable the touch settings.

# Windows® Kiosk Installation

To install the kiosk on all student testing devices running Windows:

1. [Set up your building testing environment.](#)
2. [Download the OSTP Kiosk.](#)
3. [Install the downloaded kiosk.](#)

You can also install the Windows® kiosk using one of the following methods:

- [Windows® Scripted Installation](#)
- [Windows® Network Kiosk Installation](#)

## Set up your building testing environment

Review [Testing Environment](#), above, in detail.

## Download the OSTP Kiosk

After your District Test Coordinator sets up your Assessment Technology Coordinator (ATC) account, you will receive your user account information via email.

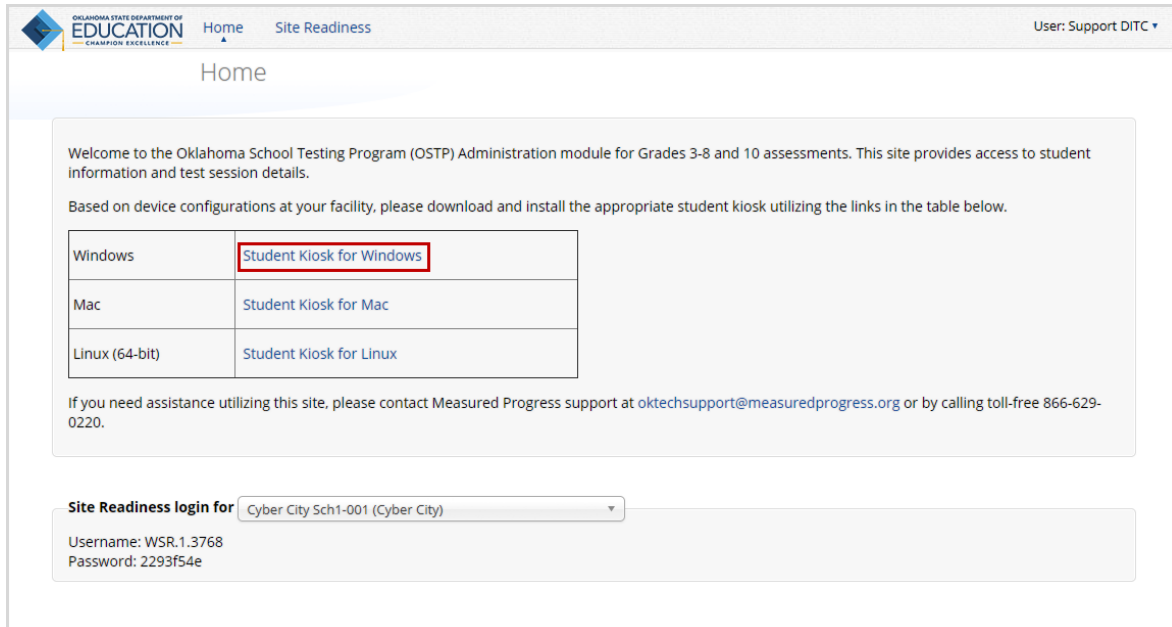
**Note:** If you do not have a dedicated ATC, a DTC or BTC can complete all ATC tasks using their DTC or BTC account.

When you have your login credentials, you are ready to download the OSTP Kiosk:

1. Go to the OSTP Portal at <https://oklahoma.measuredprogress.org/> and log in with your user name and password.
2. On the portal home page, click **Administration**.

The Administration home page appears.

3. Click **Student Kiosk for Windows**. You see a Download progress bar at the bottom of the page.



Home Site Readiness User: Support DITC ▾

## Home

Welcome to the Oklahoma School Testing Program (OSTP) Administration module for Grades 3-8 and 10 assessments. This site provides access to student information and test session details.

Based on device configurations at your facility, please download and install the appropriate student kiosk utilizing the links in the table below.

Windows	<a href="#">Student Kiosk for Windows</a>
Mac	<a href="#">Student Kiosk for Mac</a>
Linux (64-bit)	<a href="#">Student Kiosk for Linux</a>

If you need assistance utilizing this site, please contact Measured Progress support at [oktechsupport@measuredprogress.org](mailto:oktechsupport@measuredprogress.org) or by calling toll-free 866-629-0220.

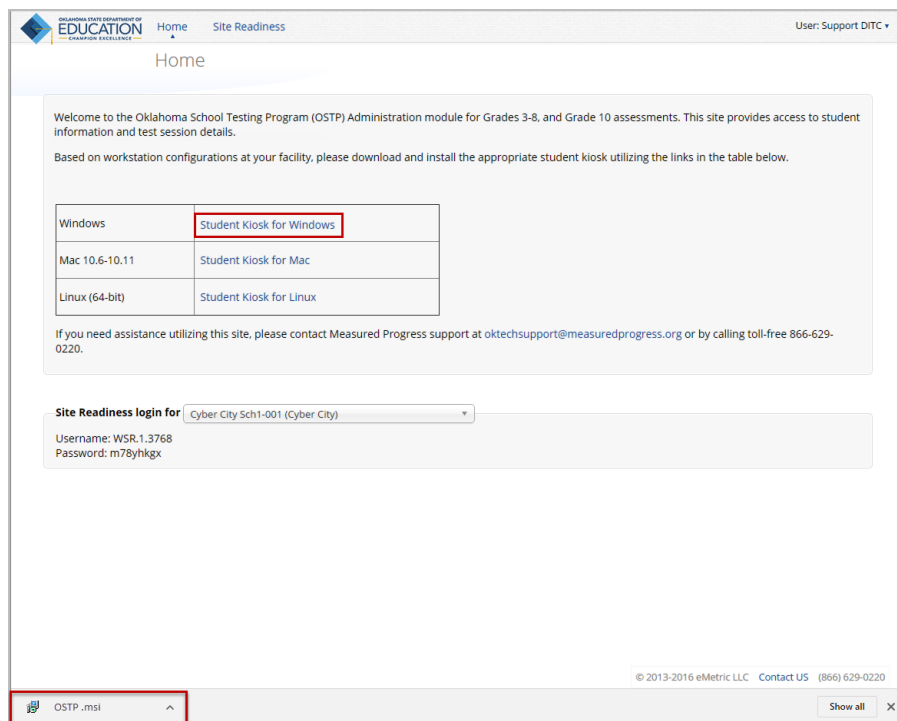
**Site Readiness login for** Cyber City Sch1-001 (Cyber City) ▾

Username: WSR.1.3768  
Password: 2293f54e

## Install the downloaded kiosk

When the download completes:

1. Click the Download button in the lower-left corner of the Administration home page or navigate to the file location you specified during the File Save process.



Home Site Readiness User: Support DITC ▾

## Home

Welcome to the Oklahoma School Testing Program (OSTP) Administration module for Grades 3-8, and Grade 10 assessments. This site provides access to student information and test session details.

Based on workstation configurations at your facility, please download and install the appropriate student kiosk utilizing the links in the table below.

Windows	<a href="#">Student Kiosk for Windows</a>
Mac 10.6-10.11	<a href="#">Student Kiosk for Mac</a>
Linux (64-bit)	<a href="#">Student Kiosk for Linux</a>

If you need assistance utilizing this site, please contact Measured Progress support at [oktechsupport@measuredprogress.org](mailto:oktechsupport@measuredprogress.org) or by calling toll-free 866-629-0220.

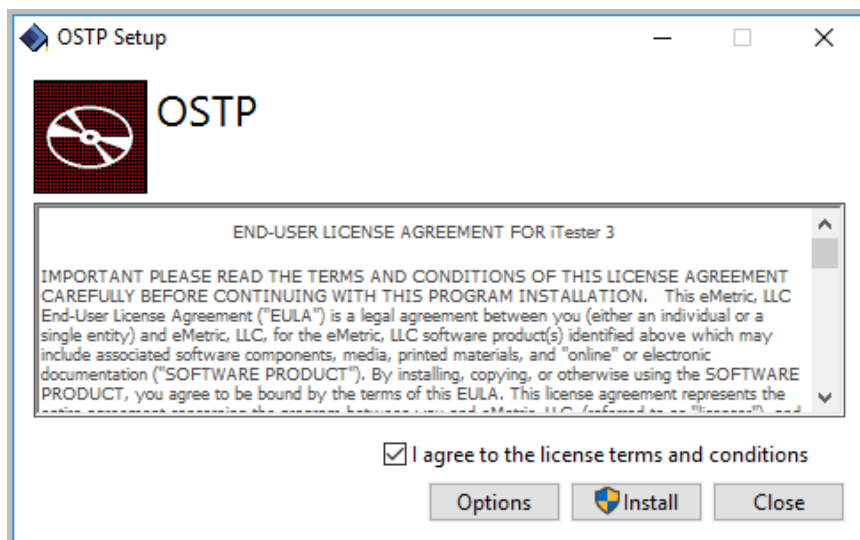
**Site Readiness login for** Cyber City Sch1-001 (Cyber City) ▾

Username: WSR.1.3768  
Password: m78yhkgx

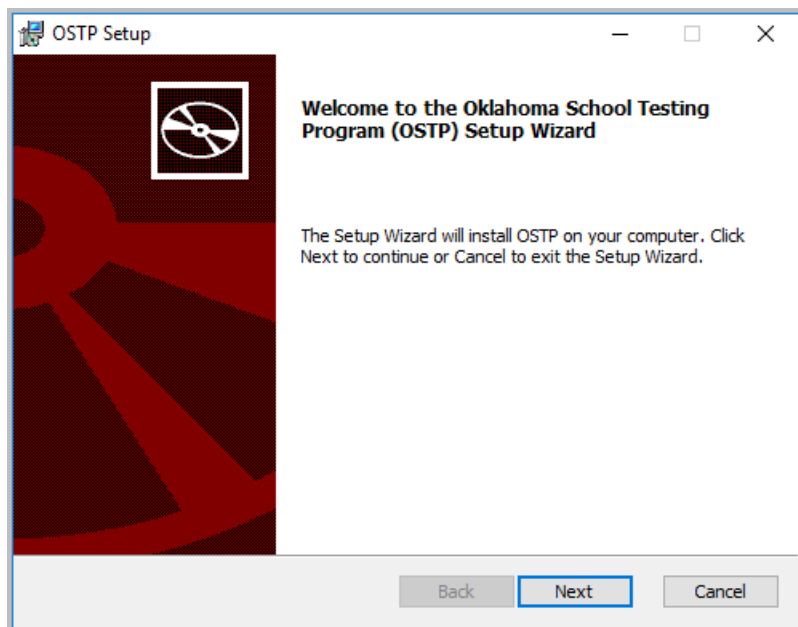
© 2013-2016 eMetric LLC [Contact US](#) (866) 629-0220

OSTP .msi Show all X

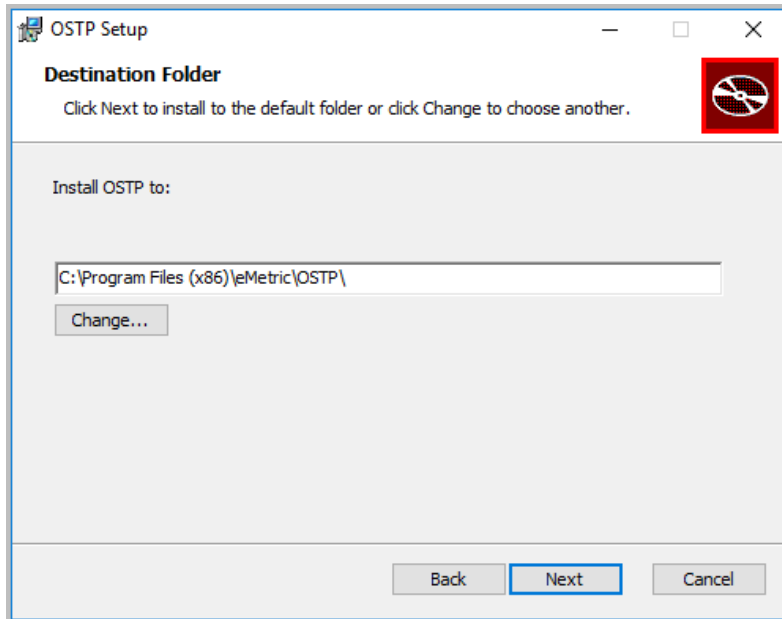
2. Read the End-User License Agreement and select **I agree to the license terms and conditions**. Click **Install** to continue.



3. Read the instructions and click **Next** to continue.



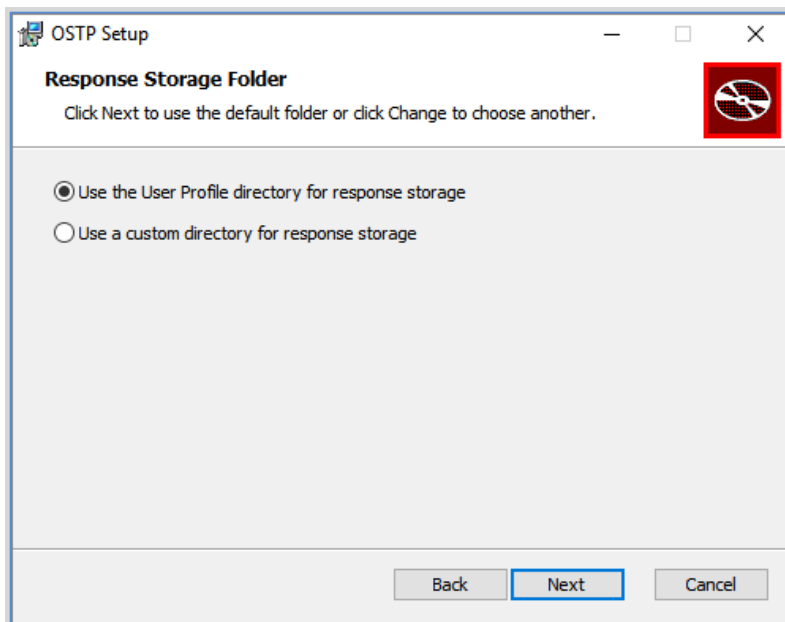
4. Type the destination folder in the space provided, and click **Next** to continue.



**Note:** You can choose to install the kiosk in a shared network folder or a local folder on the devices. We recommend a local installation to avoid network connection issues (see [Network Connectivity](#)).

5. Select the directory to store student responses, and then click **Next** to continue.

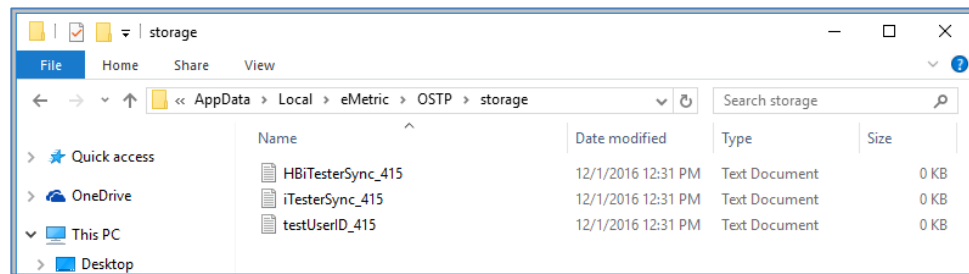
**Important:** This is the failover location for saving student responses in the event of connectivity issues.



- **Use the User Profile directory for caching**



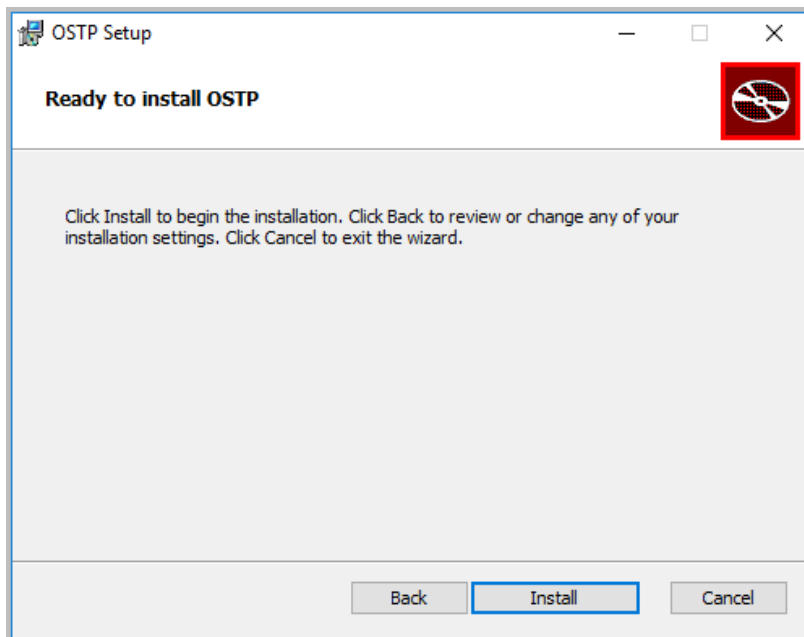
During kiosk installation, if you choose the default option to store the stored response files in the user profile, these files will have names similar to this format:



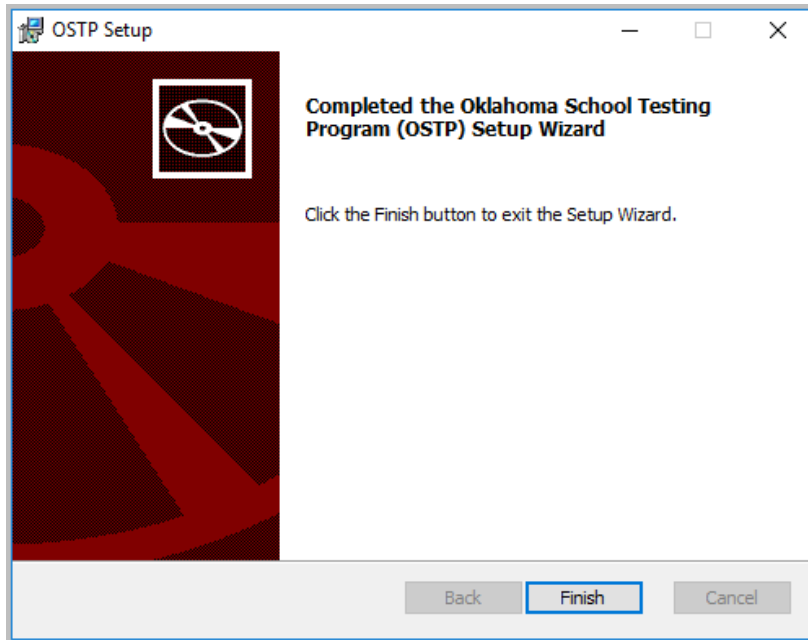
- **Use a custom directory for caching**

If you select **Save in the following directory**, you must manually enter the alternate path.

6. Confirm that you are ready to install the kiosk, and click **Install**.



7. Click **Finish** to complete the installation.



When you are ready to test the kiosk installation for this configuration, see [Site Readiness Testing and Site Certification](#).

## Windows® MSI Package Scripted Installation

Network administrators can install the OSTP Kiosk via an installation script to be executed by an Admin account in the machine. The script can be written to run without any human interaction (quiet switch) and to install in the default directory (C:\Program Files) or any target directory of choice. Uninstalling the kiosk can also be scripted.

Below are generic scripts that can be used for installation and uninstallation.

### Script Examples

<Source> = Complete path to the OSTP MSI installation file, including .msi installation file name. Example: C:\Downloads\OSTP.msi

<Target> = Complete path to the location where OSTP Kiosk should be installed other than the default location (C:\Program Files). Example: C:\OSTP\Installation\_Dir

<APPDATALOCATION> = Complete path to the location for storing the cache and encrypted student responses created due to network interruptions. Example: D:\Cache.

**Note:** Ensure that this location is excluded from system restore software like Deep Freeze.

### Installation script

```
msiexec /I "<Source>" /quiet INSTALLDIR="<Target>"
ITESTERAPPDATALOCATION="<APPDATALOCATION>" INSTALLLEVEL=2
```

```
Example: msiexec /I "C:\Downloads\OSTP.msi" /quiet INSTALLDIR="C:\OSTP"
ITESTERAPPDATALOCATION="D:\Cache" INSTALLLEVEL=2
```

**Warning!** If you do not specify ITESTERAPPDATALOCATION, then the Local Application Data folder located in the User Profile of the actively logged-in user will be used by default. If you do not specify INSTALLLEVEL=2, then the configuration required for setting the <APPDATALOCATION> will not be created.

### *Uninstallation script*

```
msiexec /X "<Source>" /quiet
```

Example: msiexec /X "C:\Downloads\OSTP.msi" /quiet

## Windows® MSI Package Installation via Group Policy

Network administrators can use Microsoft Active Directory Group Policy to distribute the OSTP MSI package seamlessly to all client computers.

Follow the step-by-step instructions described in the following Knowledge Base article: <http://support.microsoft.com/kb/816102>.

**Note:** Default installation locations will be used when using Group Policy to distribute the OSTP Kiosk. This option will also not allow systematically specifying a network location for caching and storing encrypted student responses created due to network interruptions. The local Application Data folder located in the User Profile of the actively logged-in user will be used by default.

## Windows® Network Kiosk Installation

To install the OSTP Kiosk on a network:

1. Complete the local kiosk installation listed above on the machine that will host the application.
2. Locate and distribute the shortcut in the installation folder to the devices used for testing. This will be labeled "Shortcut to OSTP" and should point to Networklaunch.exe. In a Network Installation the Networklaunch.exe must be used for testing.
3. Ensure that users have read/write/modify access to stored response directory.
4. Caching Folder: Ensure that users have read/write/modify permission to their own user profile, where the application will be copied to and run from.

Individual devices require read and write permissions to %TEMP%\eMetric as the program is copied into the local %TEMP% profile by default on first-time launch from a network location. Devices without the specified read and write permissions to %TEMP%\eMetric will experience a Windows Error Code 1260 upon first-time launch in a Network Kiosk Installation.

# Mac Kiosk Installation

To install the kiosk on all student-testing Mac devices:

1. [Set up your building testing environment.](#)
2. [Download the OSTP Kiosk.](#)
3. [Install the downloaded kiosk.](#)
4. Disable Universal Clipboard

**Note:** The kiosk for Mac devices is available only for Mac 10.9 – 10.12.

## Set up your building testing environment

Review [Testing Environment](#), above, in detail.

## Download the OSTP Kiosk

After your District Test Coordinator sets up your Assessment Technology Coordinator (ATC) account, you will receive your user account information via email.

**Note:** If you do not have a dedicated ATC, a DTC or BTC can complete all ATC tasks using their DTC or BTC account.

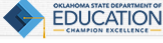
When you have your login credentials, you are ready to download the OSTP Kiosk:

1. Go to the OSTP Portal at <https://oklahoma.measuredprogress.org> and log in with your user name and password.
2. On the Portal home page, click **Administration**.

The Administration home page appears.

3. Click **Student Kiosk for Mac**.

Follow the instructions to download the Kiosk software to the devices.


[Home](#)
[Site Readiness](#)
User: Support DITC ▾

Home

Welcome to the Oklahoma School Testing Program (OSTP) Administration module for Grades 3-8 and 10 assessments. This site provides access to student information and test session details.

Based on device configurations at your facility, please download and install the appropriate student kiosk utilizing the links in the table below.

Windows	<a href="#">Student Kiosk for Windows</a>
Mac	<a href="#">Student Kiosk for Mac</a>
Linux (64-bit)	<a href="#">Student Kiosk for Linux</a>

If you need assistance utilizing this site, please contact Measured Progress support at [oktechsupport@measuredprogress.org](mailto:oktechsupport@measuredprogress.org) or by calling toll-free 866-629-0220.

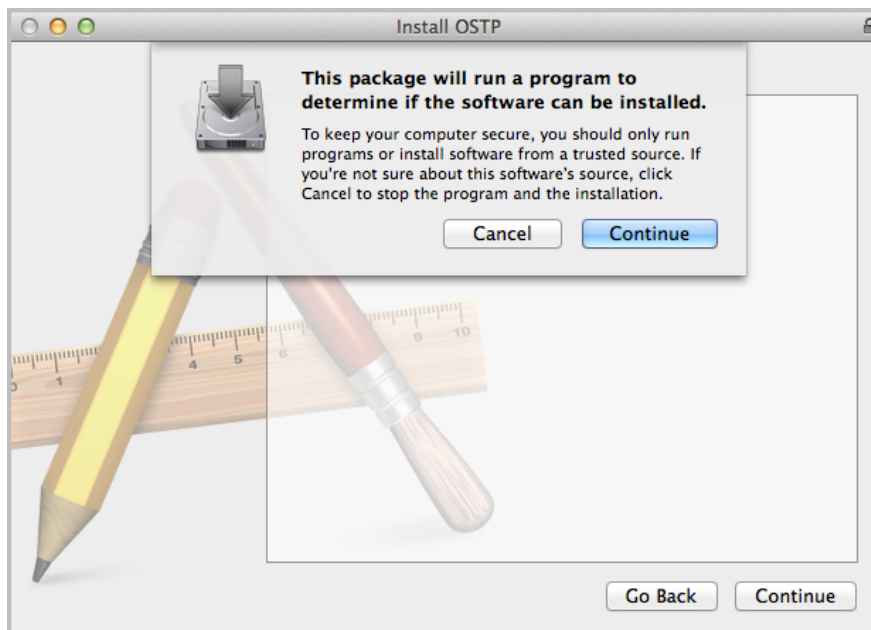
Site Readiness login for Cyber City Sch1-001 (Cyber City) ▾

Username: WSR.1.3768  
Password: 2293f54e

## Install the downloaded kiosk

Upon completion of the download process:

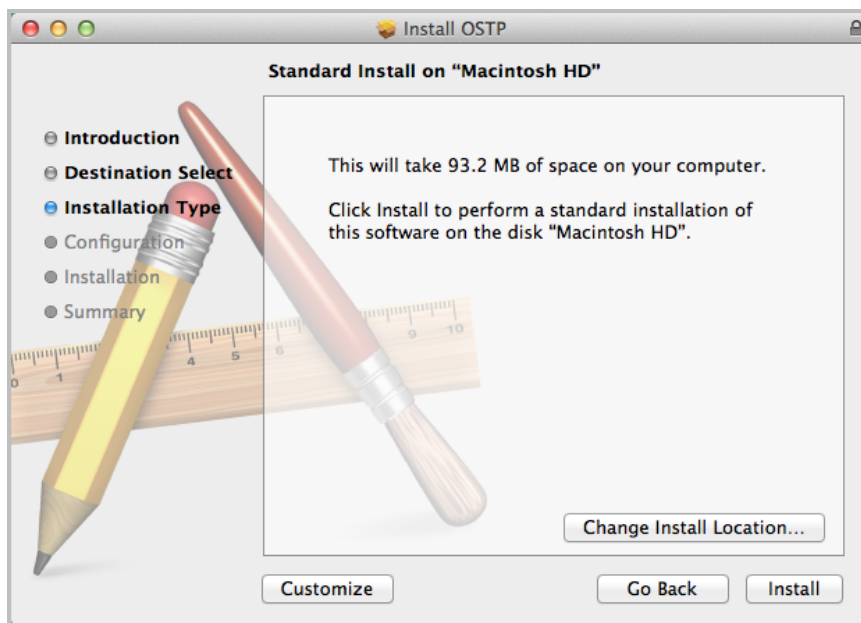
1. Navigate to the file location you specified during the File Save process.
2. The package will run a program to determine if the software can be installed. Click **Continue**.



3. Read the instructions and click **Continue**.

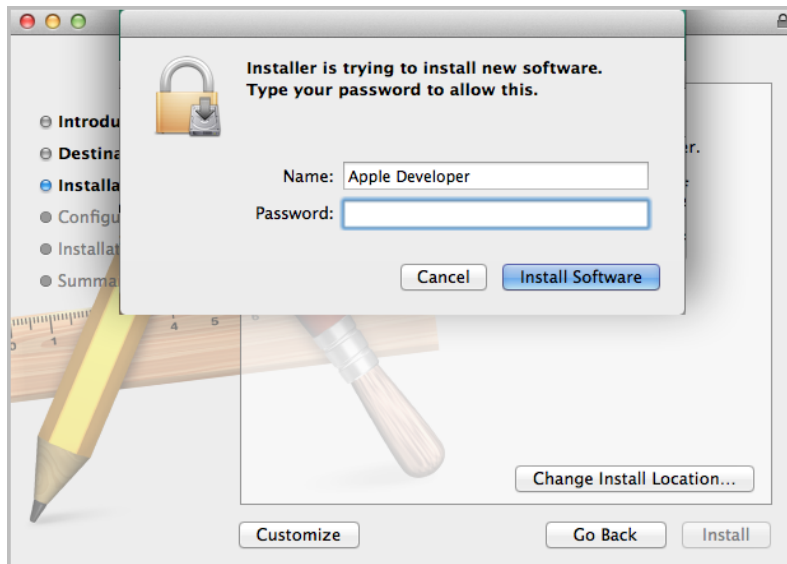


4. Verify the installation type.



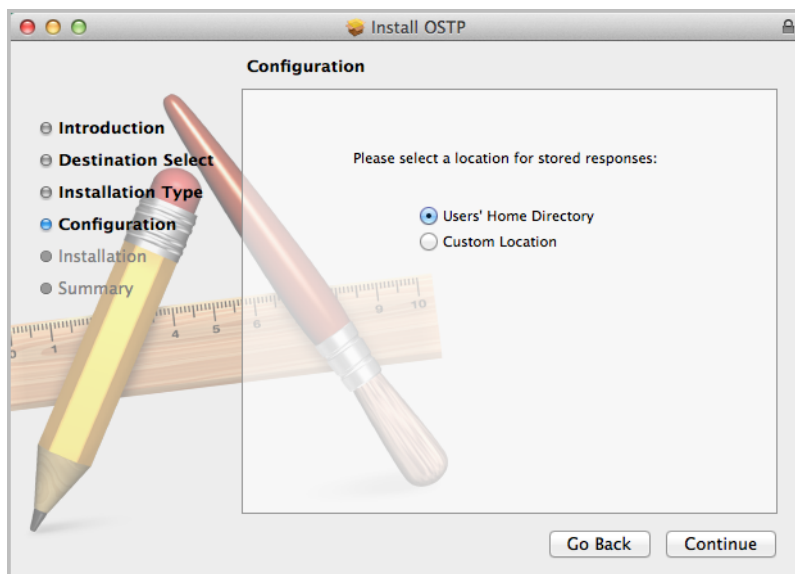
**Note:** To change the installation location, click **Change Install Location**.

5. When you are ready, click **Install**.



**Note:** You may be required to enter a password.

6. Indicate where you would like to store student responses, and click **Continue**.



- **User's Home Directory**

During kiosk installation, if you choose the default option to store the stored response files in the user profile, these files will have names similar to this format:

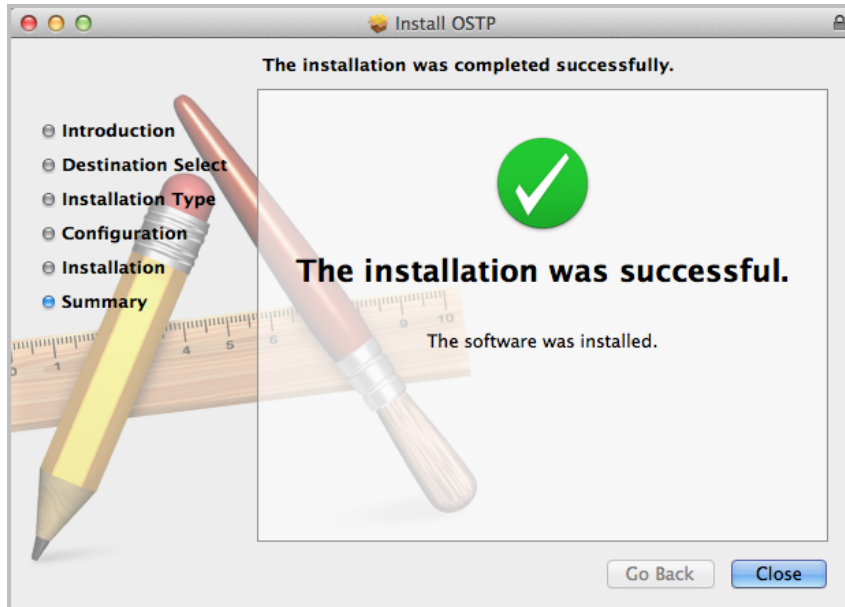
~/.iTester/storage/iTesterSync\_AD849G-DA56-19F3-73K39823DJS3

- **Custom location**

If you select **Save in the following directory**, you must manually enter the alternate path.

**Important:** This is the failover location for saving student responses in the event of connectivity issues. For more information, contact the Measured Progress Service Desk at [oktechsupport@measuredprogress.org](mailto:oktechsupport@measuredprogress.org) or (866) 629-0220.

7. When the installation is complete, click **Close**.



When you are ready to test the kiosk installation for this configuration, see [Site Readiness Testing and Site Certification](#).

## Disabling Universal Clipboard

Any Apple device running Mac OS Sierra (10.12.x) now has the ability to utilize Apple's Universal Clipboard. The Universal Clipboard allows users to copy content from one Apple device to another (iPad to Mac, Mac to iPhone, etc). The following devices may use this feature:

- MacBook (Early 2015 or newer)
- MacBook Pro (2012 or newer)
- MacBook Air (2012 or newer)
- Mac mini (2012 or newer)
- iMac (2012 or newer)
- Mac Pro (Late 2013)

Disabling Universal Clipboard requires that Handoff be disabled on the Mac desktop or laptop. To disable Handoff:

1. Launch System Preferences
2. Select **General**
3. Unselect **Allow Handoff between this Mac and your iCloud device**



# Linux<sup>®</sup> Kiosk Installation

To install the kiosk on all student-testing devices running Linux<sup>®</sup>:

1. [Set up your building testing environment.](#)
2. [Download the OSTP Kiosk.](#)
3. [Install the downloaded kiosk.](#)

## Set up your building testing environment

Review [Testing Environment](#), above, in detail.

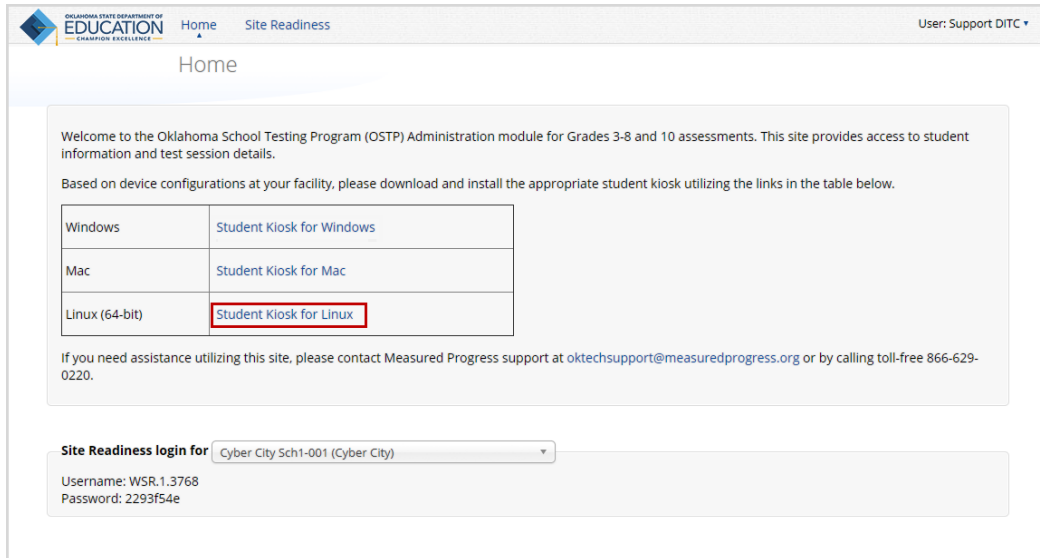
## Download the OSTP Kiosk

After your District Test Coordinator sets up your Assessment Technology Coordinator (ATC) account, you will receive your user account information via email.

**Note:** If you do not have a dedicated ATC, a DTC or BTC can complete all ATC tasks using their DTC or BTC account.

When you have your login credentials, you are ready to download the OSTP Kiosk:

1. Go to the OSTP Portal at <https://oklahoma.measuredprogress.org> and log in with your user name and password.
2. On the Portal home page, click **Administration**.  
The Administration home page appears.
3. Click **Student Kiosk for Linux**.



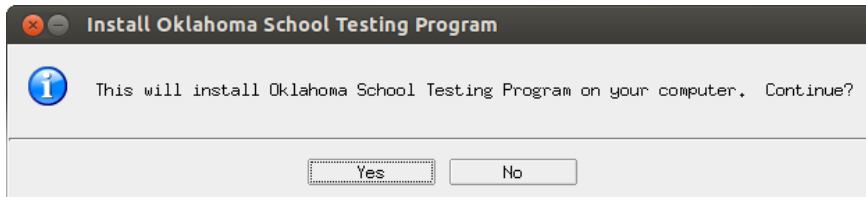
4. Follow the instructions to download and extract the Kiosk software on the devices.

**Note:** Linux 32-bit is no longer supported.

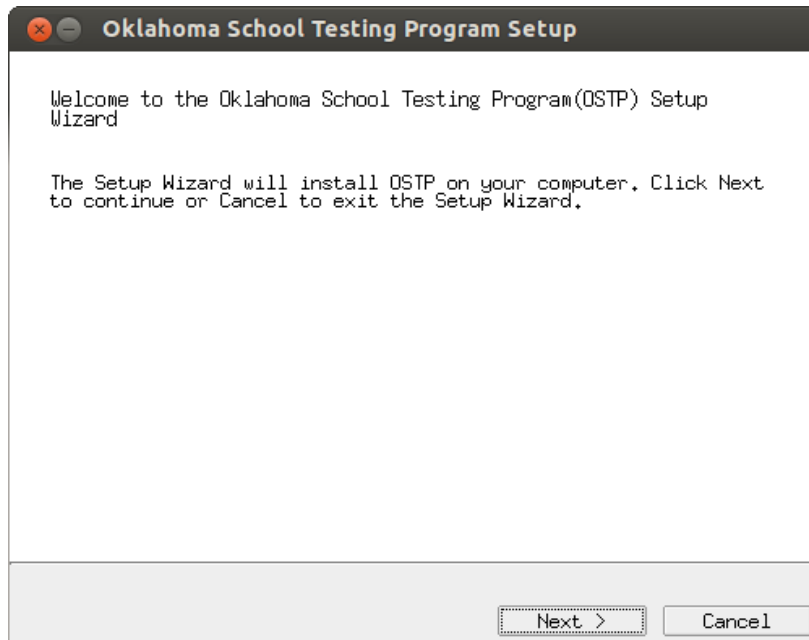
## Install the downloaded kiosk

Upon completion of the download process:

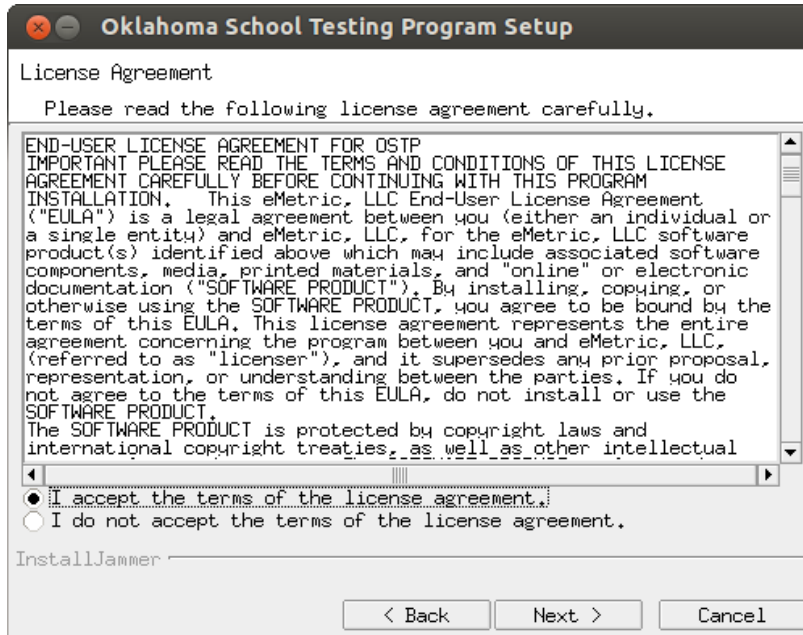
1. Launch a terminal, navigate to the kiosk installer file, and execute.
2. Click **Yes** on the Installation Page.



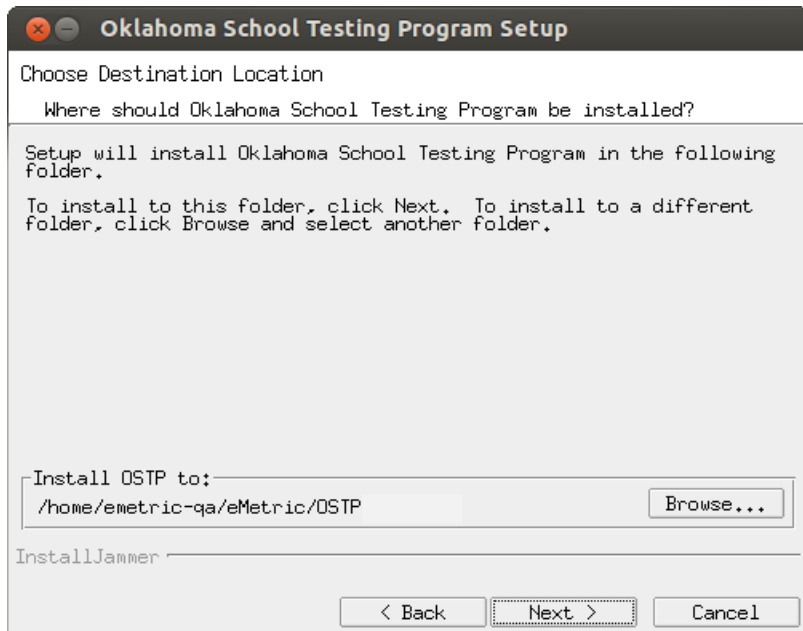
3. Read the Welcome page, and click **Next** to continue.



4. Read the License Agreement and click **I accept the terms of the license agreement**. Click **Next** to continue.



5. Verify the installation folder is correct.

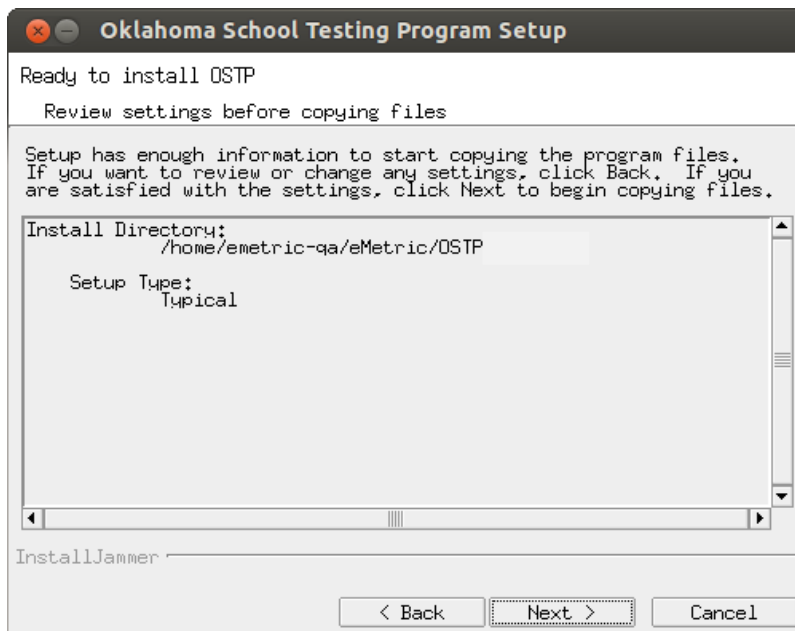


**Tip:** If it is not correct, click **Browse** to find the destination where the kiosk should be installed.

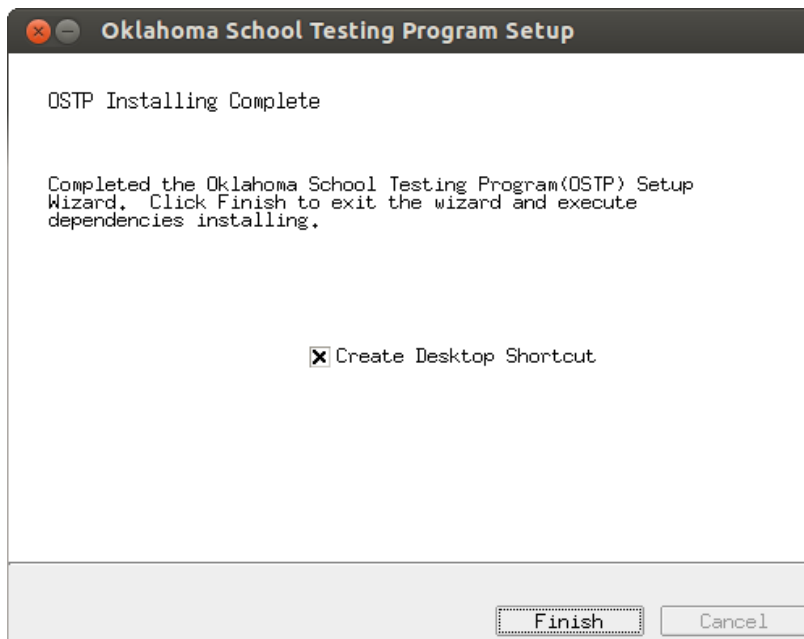
We recommend a local installation to avoid network connection issues (for more information, see [Network Connectivity](#)).

**Note:** This will also be the cache location to save student responses.

6. Click **Next** to continue.
7. Review the settings before the installer begins to copy files, and click **Next**.



8. Click **Finish** to exit Setup.



When you are ready to test the kiosk installation for this configuration, see [Site Readiness Testing and Site Certification](#).

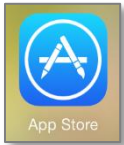
# iPad Application Installation

## Download the OSTP app from the Apple App Store

The OSTP app is available as a free download from the Apple App Store.

If you do not already have the OSTP app on your iPad, download it from the Apple App Store:

1. Open the **App Store** on the iPad.



2. Search for *OSTP*.



3. When you locate the OSTP app, click  to download it to the iPad.

When you are ready to test the kiosk installation for this configuration, see [Site Readiness Testing and Site Certification](#).

## Automatic Assessment Configuration

Beginning in iOS 9.3.2, Apple has provided a new feature to support assessments on iPad called Automatic Assessment Configuration (AAC). When you launch the OSTP App, log into a test, and then logs into a test session, AAC will automatically prompt you to enter single app mode and will disable auto correction, define, spell check, predictive keyboard, and some keyboard shortcuts. This feature helps ensure a secure test environment without requiring IT coordinators to use Mobile Device Manager Software or manually turn on guided access and change keyboard settings. AAC is the preferred method of securing the OSTP App and should be used in place of guided access. If guided access is on, it will override AAC; therefore guided access should be turned-off to allow AAC to function. No additional set-up is necessary to enable AAC.

# Chromebook™ Application Installation

The Chromebook™ application is available for:

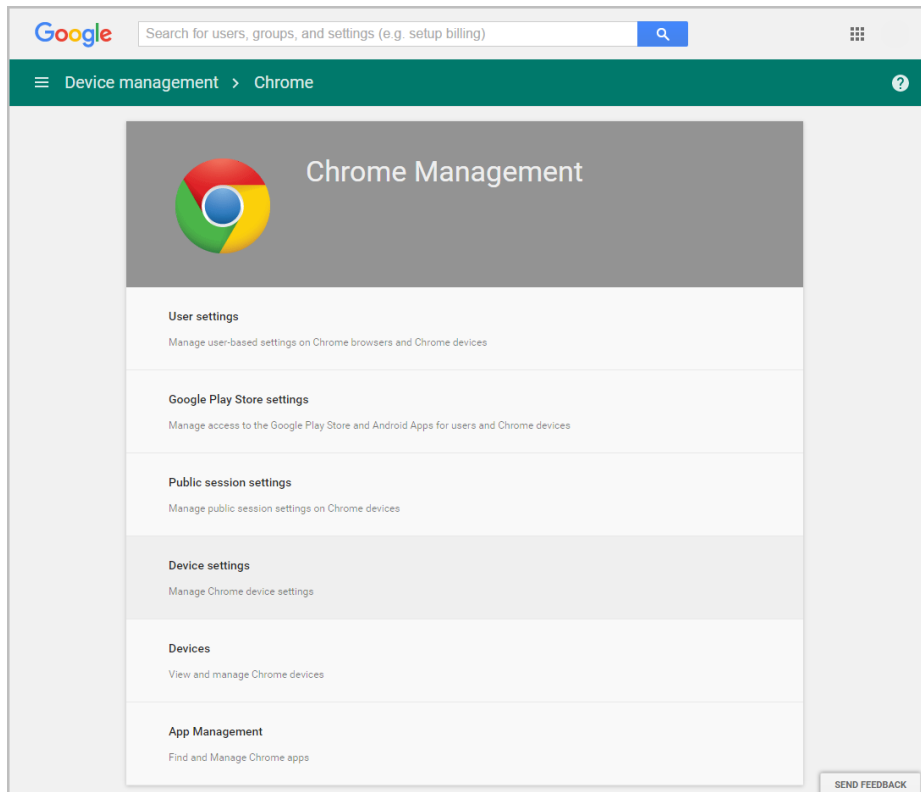
- [Managed Chromebooks™](#).
- [Non-managed Chromebooks™](#).

## Managed Chromebooks™

These instructions are for technology coordinators who have access to their Chromebook™ device management console to administer and manage their Chromebook™ devices.

To install the OSTP app:

1. As the Chromebook™ administrator, log in to your Chrome management console (<https://admin.google.com>).
2. Navigate to Device Management, and select **Chrome management**.
3. Click **Device Settings**.



4. In the **Device Settings** section, scroll to **User Data** (Erase all local user info, settings, and state after each sign-out) field, select **Do not erase all local data** from the drop-down list.

**User Data** ⓘ  
Locally applied

**Erase all local user info, settings, and state after each sign-out**  

Do not erase all local user data ▼



**Note:** This setting is crucial to allow Chrome local storage to be used to store student responses if network connectivity is lost.

5. On the Device Settings page, scroll down to the **Kiosk Settings** section:

- Ensure that Public Session Kiosk is set to **Do not allow Public Session Kiosk**.

**Kiosk Settings** ⓘ  
Locally applied

**Public Session Kiosk**  

Do not allow Public Session Kiosk ▼

Before you can enable a Public Session, you will need to first create one by navigating to Chrome Management > Public Session Settings.

**Auto-Launch Kiosk App**  

None ▼

6. Click **Manage Kiosk Applications**.

7. From the Kiosk Apps window, click **Chrome Web Store**.

8. To add the OSTP app, in the search box, type *OSTP* and press **Enter**.

9. When you see the OSTP app, click **Add**.

The OSTP app appears in the “Total to install” section.

Kiosk Apps

The selected kiosk apps will be automatically installed.

Chrome Web Store >

Domain Apps >

Specify a Custom App >

Total to install: 1

OSTP for Chrome

Details Remove

Save

Cancel



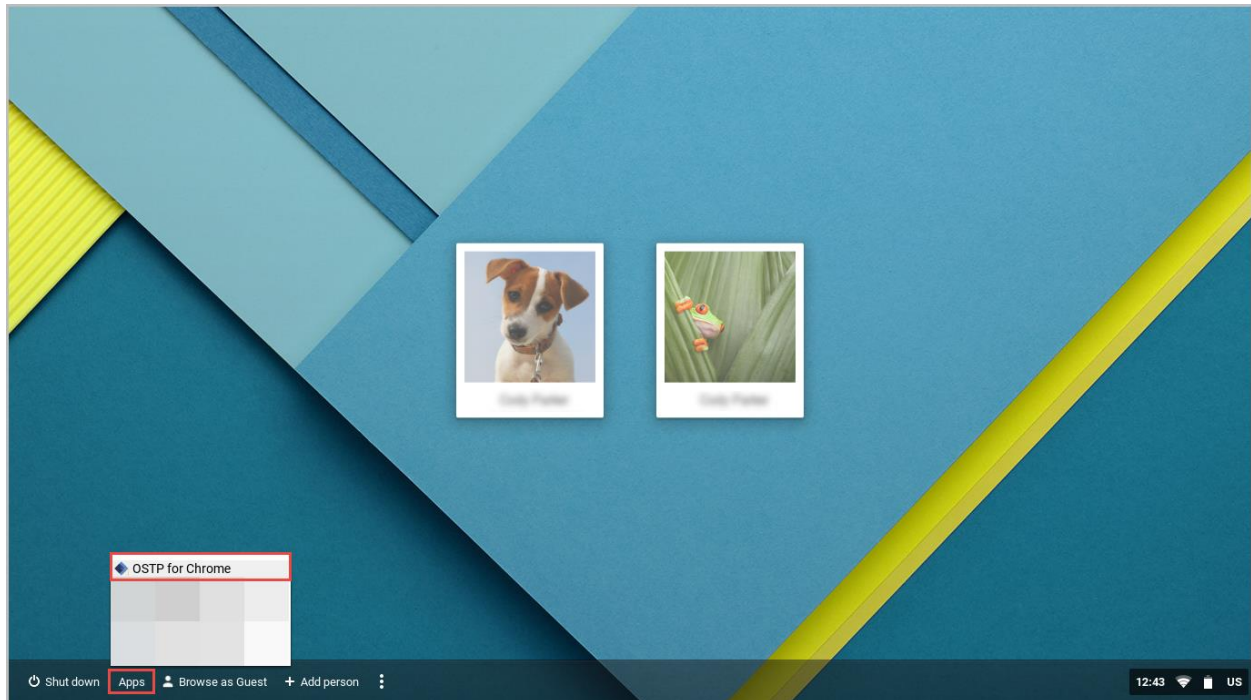
10. Click **Save**.

When these steps are completed, the OSTP application will appear on all Chromebook™ devices that are in your domain.

When you are ready to test the kiosk installation for this configuration, see [Site Readiness Testing and Site Certification](#).



**Important:** Students should not log into Chromebooks™ to take the operational test. When the managed Chromebooks™ are turned on, click the **Apps** link on the bottom of the log-in screen and select the **OSTP** app. The secure browser will open in full-screen mode.



For more information, see the following links:

- [Use Chromebooks for Student Assessments](#).

**Important:** Read “Scenario 1: School sets up Chromebook™ to run as a Single App Kiosk running the exam app.” Do not follow the instructions for Scenarios 2 and 3.

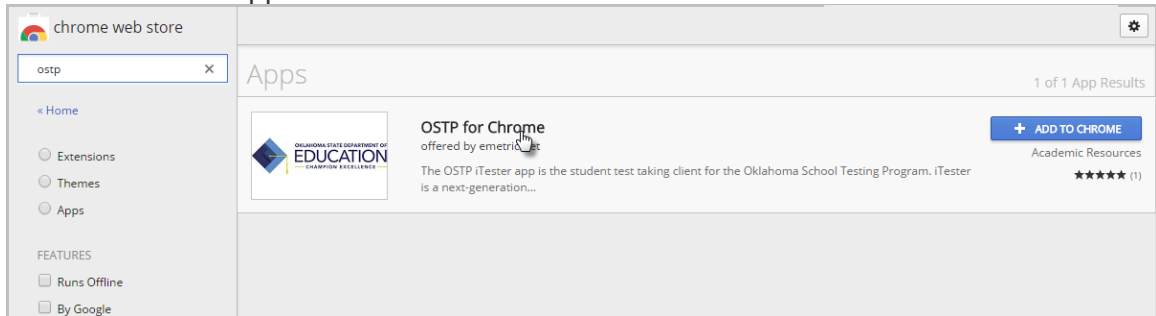
- [Manage Device Settings](#), which provides general information for managed Chromebooks.

## Non-Managed Chromebooks

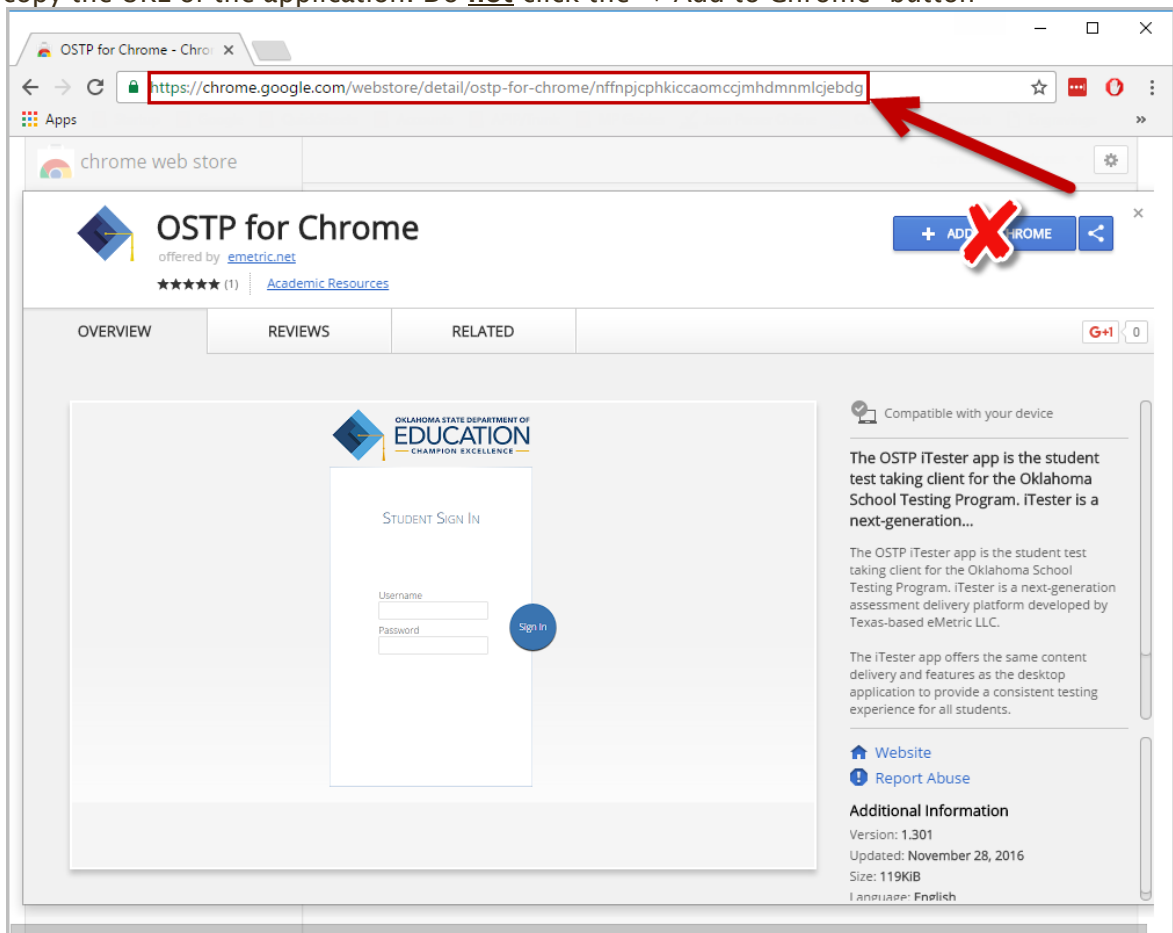
These instructions are for installing the OSTP app onto individual, non-managed Chromebooks™.

To install the OSTP for Chrome app:

1. Using the Chromebook™, search for OSTP in the Chrome Web Store and click into the OSTP for Chrome application.

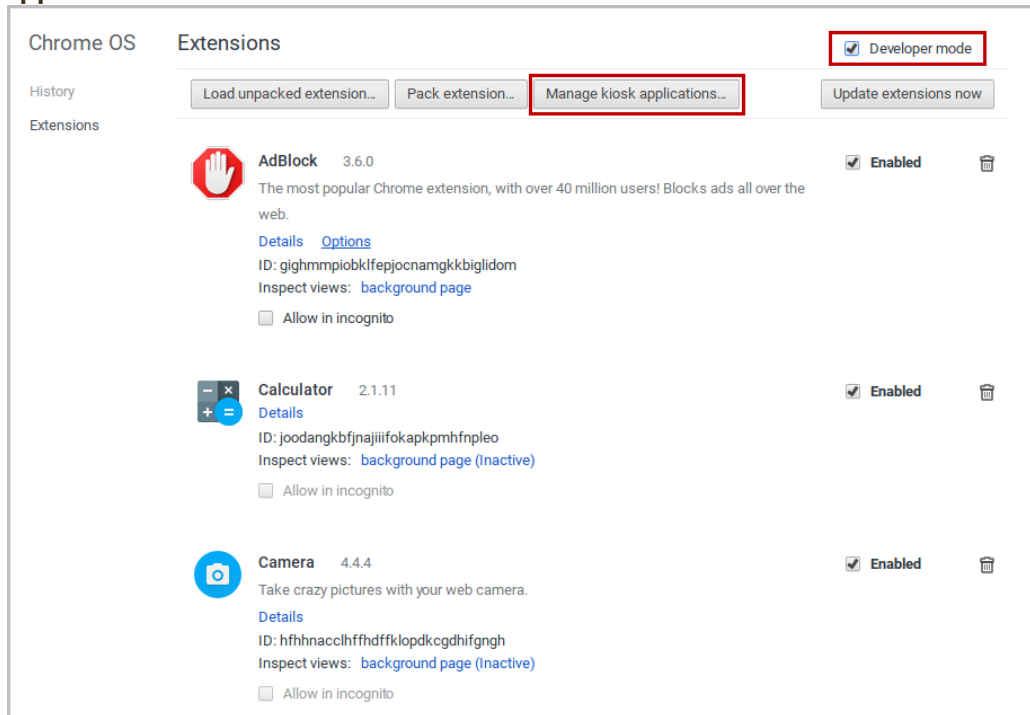


2. Once the OSTP for Chrome detail page comes up, use CTRL + C on your keyboard to copy the URL of the application. Do **not** click the "+ Add to Chrome" button

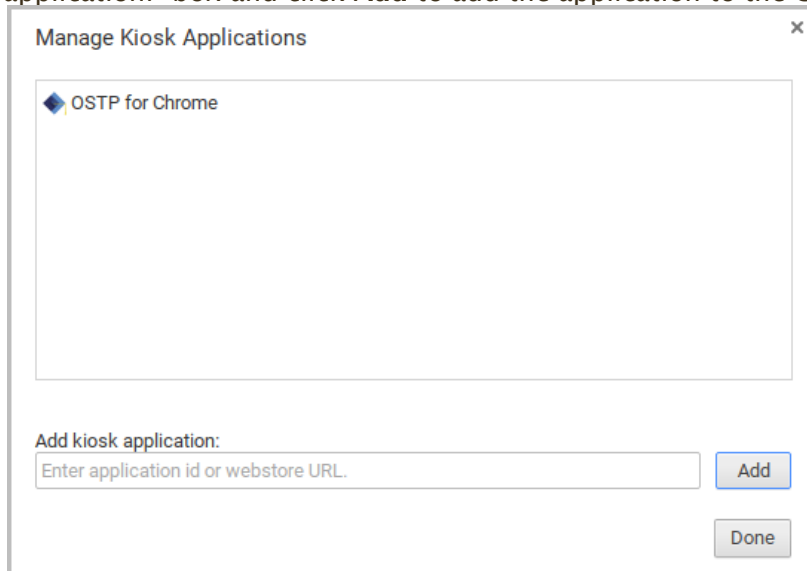


3. Open a separate tab and type **chrome://extensions** into the search bar.

4. At the top of the page, select “Developer mode” followed by **Manage kiosk applications**.

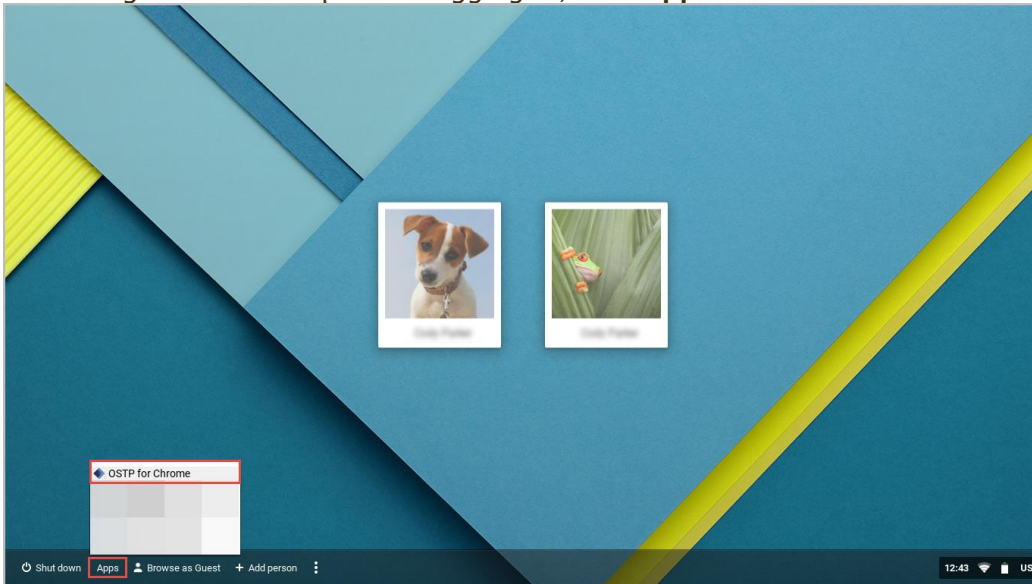


5. In the Manage Kiosk Application window, paste the URL from step 2 into the “Add kiosk application:” box and click **Add** to add the application to the Chromebook.



6. Sign out of the Chromebook™ to return to the main login screen.

7. On the login screen and prior to logging in, click **Apps** at the bottom left of the screen.



8. To launch the app, select **OSTP for Chrome**.

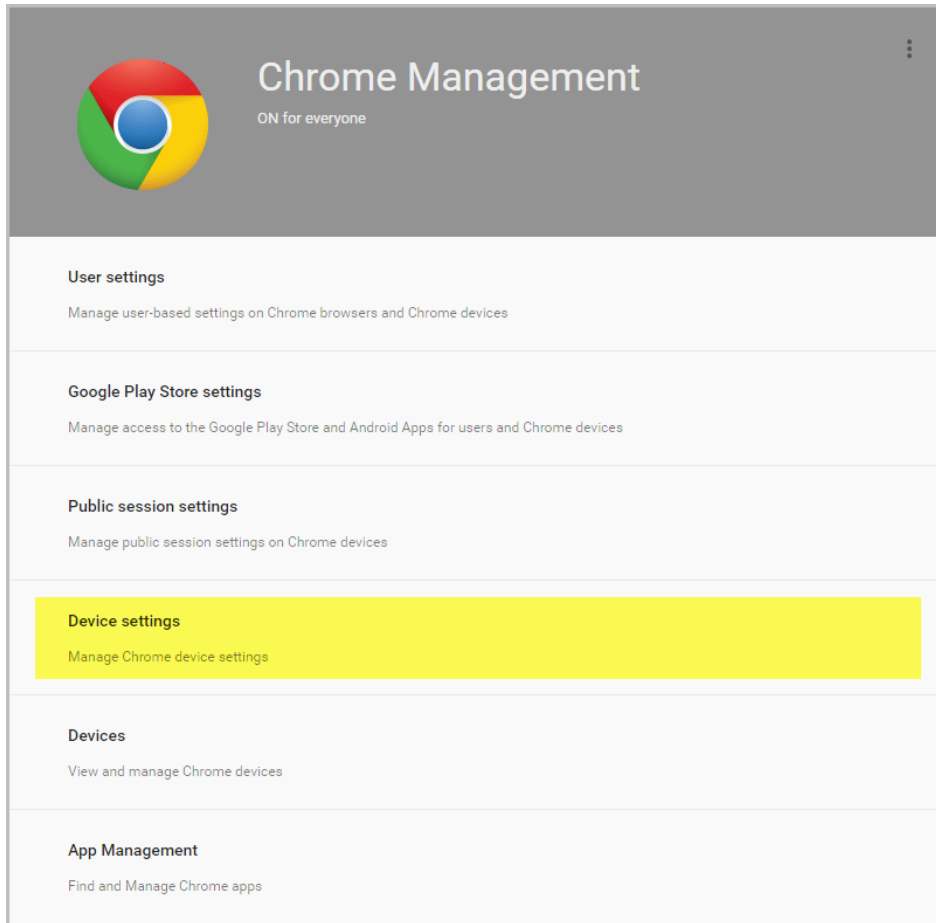
When you are ready to test the kiosk installation for this configuration, see [Site Readiness Testing and Site Certification](#).

## Managed Chromebooks™: Turn off auto-update

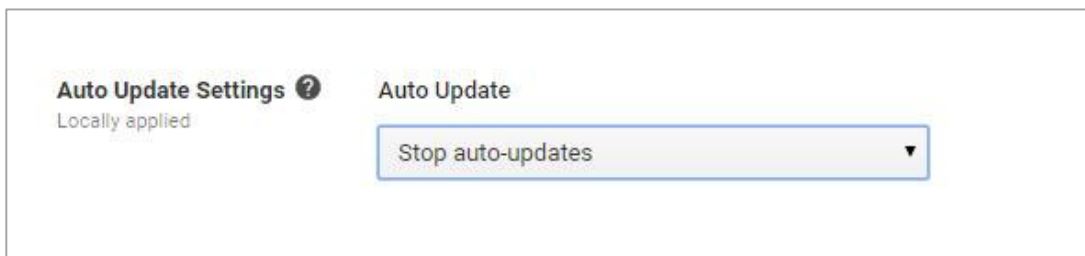
For the Spring 2018 administration, Chrome OS™ versions 59-62 will be supported. Newer versions of Chrome OS™ may be released by Google during the testing window, but these newer versions will not be supported until fully tested by eMetric. Therefore, it is highly recommended that auto-update be turned off on all managed Chromebook devices until after the testing window is closed.

To turn off auto-update:

1. As the Chromebook™ administrator, log in to your Chrome management console (<https://admin.google.com>).
2. Navigate to Device Management, click **Chrome Management** and then select **Device Settings**.



3. On the Device Settings page, scroll down to the Auto Update Settings section within Device Update Settings:
  - Ensure that Auto Updates is set to **Stop auto-updates**.



**Note:** Non-managed Chromebooks™ do not have an option to turn off auto-update. Therefore, use of these devices once they have updated to a non-supported version of Chrome OS™ is at the district's own risk.

# Site Readiness Test and Site Certification

## Purpose

Site Readiness provides a means to identify potential technical problems prior to student testing.

Assessment Technology Coordinators will launch the kiosk on each device or device configuration being used for testing and run the Site Readiness test, which is designed to verify that student testing devices meet the minimum requirements and have been properly configured.

The Site Readiness Test includes the System Set-up Test, which checks bandwidth to the test server, connectivity to the local stored response folder, screen resolution, and audio on the student test device, and the Student Interface Test, which simulates a test scenario and will allow you to confirm that test tools and interactions are usable from the device.

**Note:** The Site Readiness test must be conducted on the secure kiosk and apps installed on a mobile device. The Site Readiness test does not need to be conducted on the browser used for the practice test.

## Site Readiness Testing

It is crucial that the Site Readiness test be performed on **every** device or device configuration that is to be used for testing.

**Note:** The results for each device will be captured and displayed on the Site Setup page within the OSTP Portal.

To test every device configuration in the site:

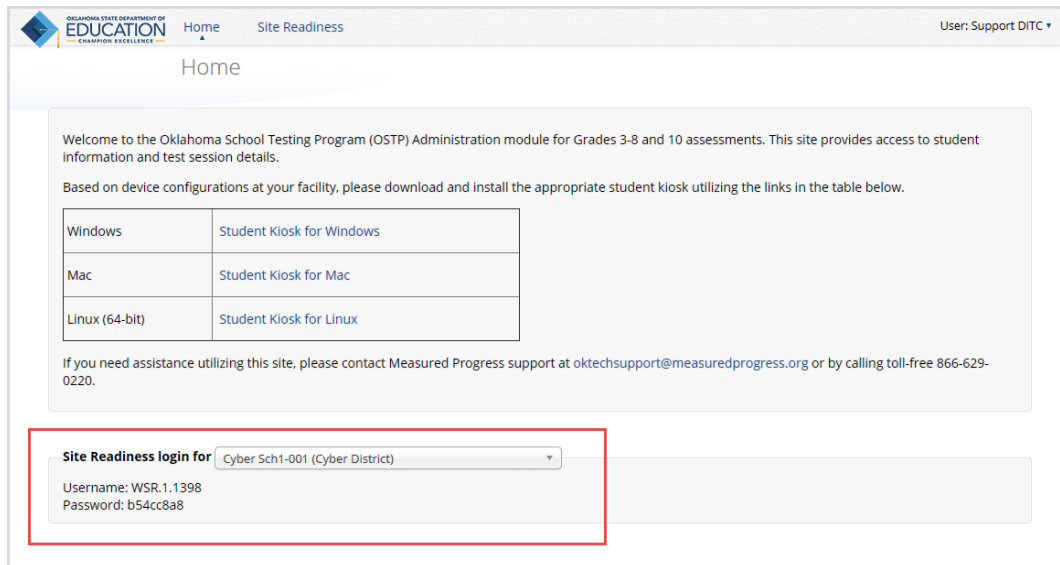
1. [Find the Site Readiness account information.](#)
2. [Authenticate every computer or computer configuration to be used for testing.](#)

When all device configurations for a site have successfully completed the Site Readiness test, [certify the site for student testing.](#)

## Find the Site Readiness account information

1. Go to the OSTP Portal at <https://oklahoma.measuredprogress.org> and log in with your user name and password.
2. On the portal home page, click **Administration**.

The Site Readiness account information appears at the bottom of the Administration home page.



Home Site Readiness User: Support DITC

Welcome to the Oklahoma School Testing Program (OSTP) Administration module for Grades 3-8 and 10 assessments. This site provides access to student information and test session details.

Based on device configurations at your facility, please download and install the appropriate student kiosk utilizing the links in the table below.

Windows	<a href="#">Student Kiosk for Windows</a>
Mac	<a href="#">Student Kiosk for Mac</a>
Linux (64-bit)	<a href="#">Student Kiosk for Linux</a>

If you need assistance utilizing this site, please contact Measured Progress support at [oktechsupport@measuredprogress.org](mailto:oktechsupport@measuredprogress.org) or by calling toll-free 866-629-0220.

Site Readiness login for Cyber Sch1-001 (Cyber District)

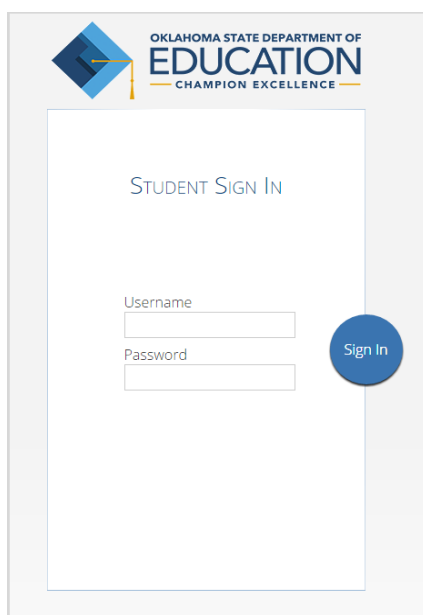
Username: WSR.1.1398  
Password: b54cc8a8

3. Make a note of the user name and password for your building, which you will use to log in to the kiosk.

## Authenticate every device or device configuration to be used for testing

1. Launch the OSTP Kiosk on the device.
2. Log in to the kiosk with the Site Readiness user name and password provided for your building.

**Important:** Use the Site Readiness login credentials exclusively for Site Readiness testing in your building only. Do not use the Site Readiness credentials for any other purpose or for any other building.



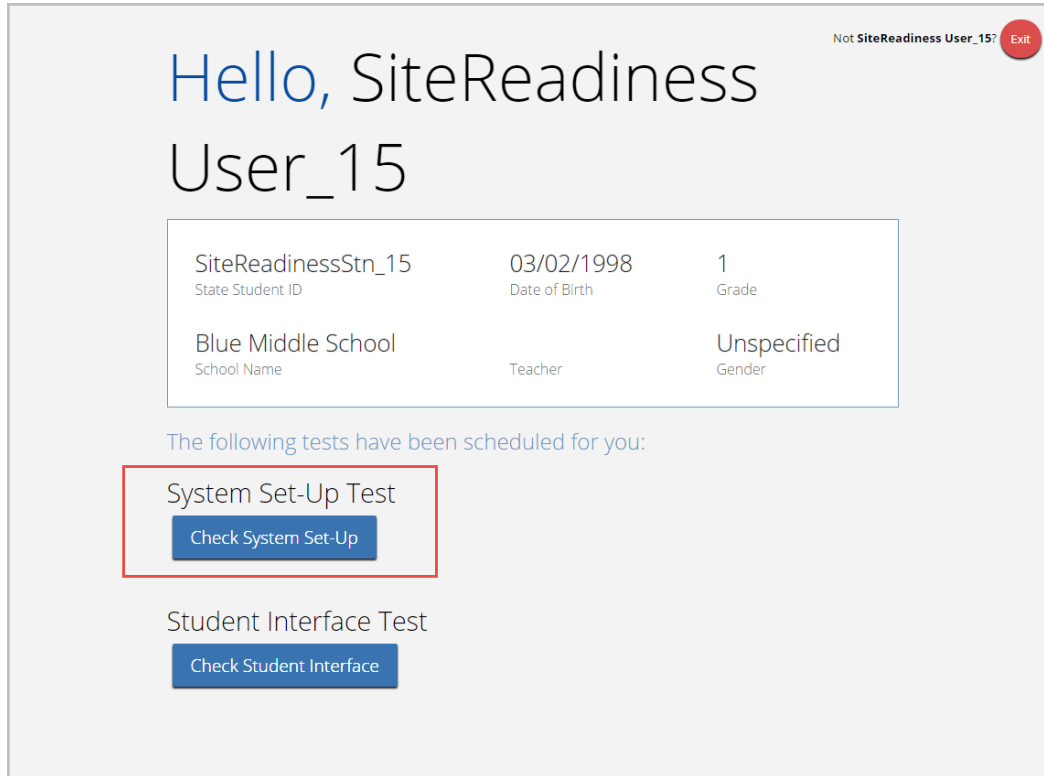
OKLAHOMA STATE DEPARTMENT OF  
EDUCATION  
CHAMPION EXCELLENCE

STUDENT SIGN IN

Username  
Password

Sign In

3. Review the Authentication Screen to confirm your building name. In the System Set-Up Test section, click **Check System Set-Up** to begin the System Set-Up Test.



The screenshot shows the SiteReadiness User Interface for User\_15. At the top, it says "Hello, SiteReadiness User\_15". In the top right corner, there is a red circular button labeled "EXIT" and a text label "Not SiteReadiness User\_15?". Below the greeting, there is a table with user information:

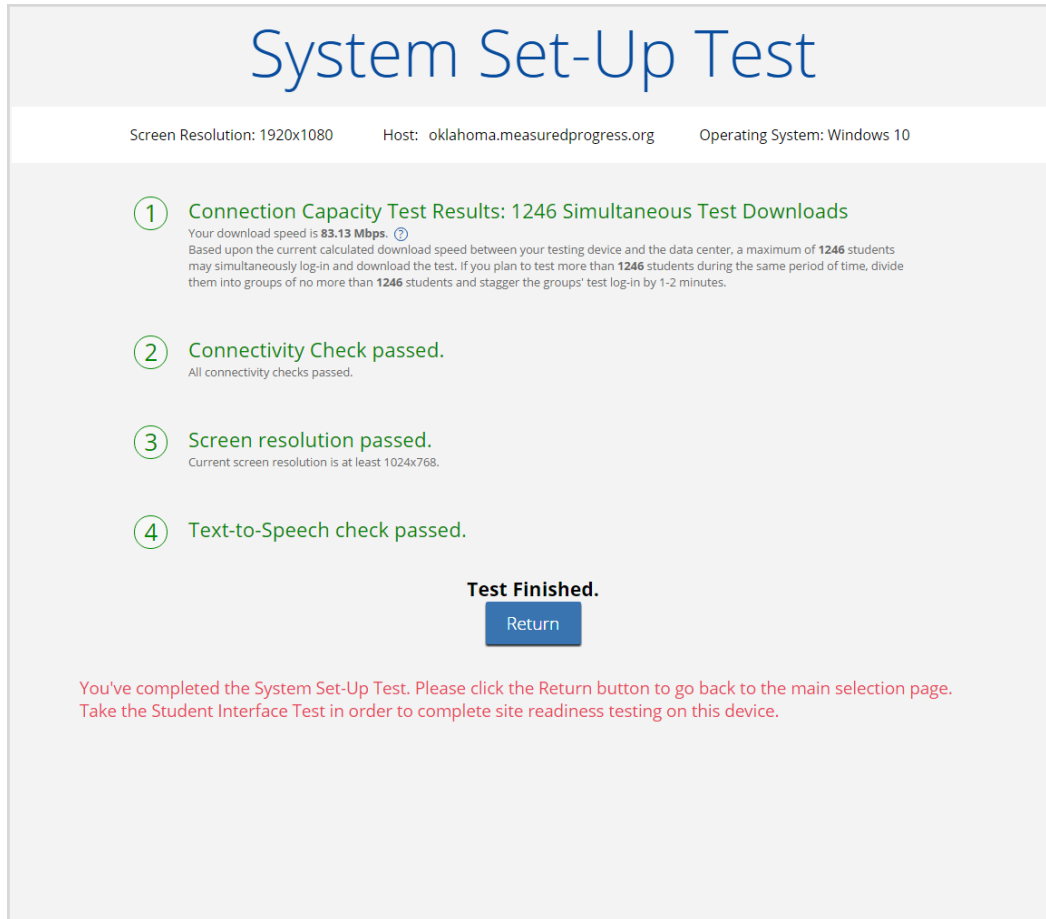
SiteReadinessStn_15 State Student ID	03/02/1998 Date of Birth	1 Grade
Blue Middle School School Name	Teacher	Unspecified Gender

Below the table, it says "The following tests have been scheduled for you:". There are two test sections:

- System Set-Up Test**: Contains a blue button labeled "Check System Set-Up". This section is highlighted with a red rectangle in the image.
- Student Interface Test**: Contains a blue button labeled "Check Student Interface".

The screen resolution, host URL, and operating system for the device are listed at the top of the System Set-Up page. The results of each test appears as soon as it is completed.



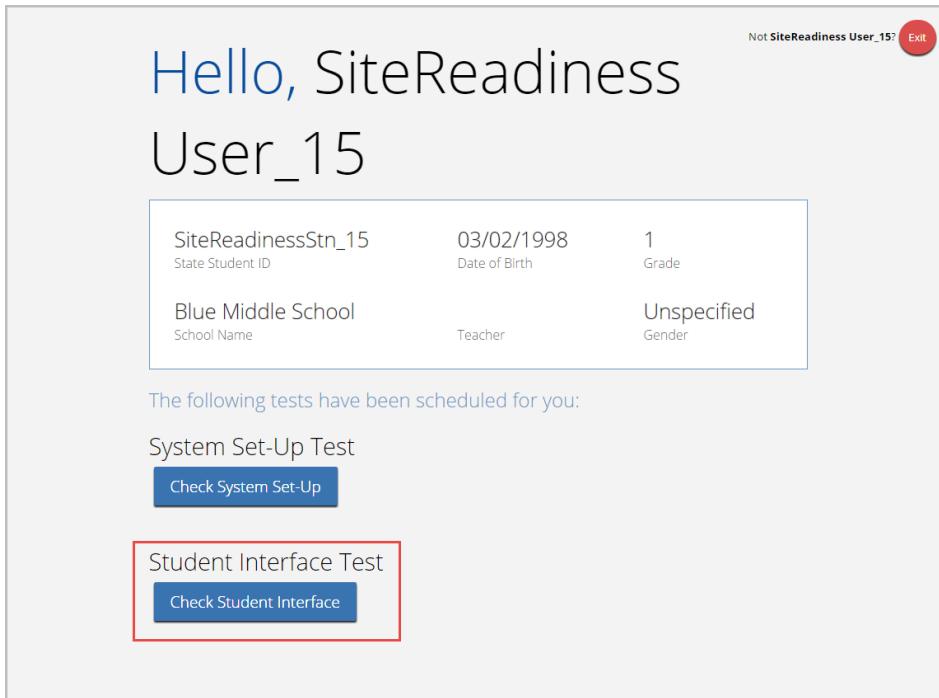


4. The Connection Capacity Test evaluates your site's capacity for simultaneous test downloads. It provides you with your current download speed between the testing device and the testing servers (data center) and based on that speed, it supplies you with the maximum number of students that may simultaneously **log-in** and **download** a test session.

If you plan to test more students than the number of simultaneous test downloads listed during the same period of time, we recommend dividing them into groups no greater than the number of simultaneous test downloads provided, and stagger the groups' test log-in by 1-2 minutes. This will ensure that test content is downloaded without interruption.

5. The Connectivity Check is designed to ensure that the testing device has access to both the kiosk's local storage folder where student responses will be saved if the test device loses internet connectivity, and the testing servers.
  - If the Connectivity Check fails with a message that says *"The connectivity check failed. Please check your read and write permissions to the storage folders and try again or contact Support for further assistance. Error Code: 6004 - StorageWriteFail"* this means that the OSTP Kiosk does not have the proper permissions to the storage folder. The kiosk requires the read, write, and modify permissions on Windows and Read & Write on Mac.
  - If the test fails for any other reason other than "Storage location written," please contact the Help Desk immediately.

6. The screen resolution test will ensure that the testing device meets the required screen size and resolution for an optimal testing experience. If this test fails, adjust the screen resolution of the device.
7. In the Text-to-Speech field, click **Test Text-to-Speech** to play a voice sample.
  - If you can hear the voice sample, click **Yes**.
  - If you cannot hear the voice sample, click **No** and fix your audio connection. Please ensure that there is a voice package installed on your machine, that there is an audio playback device connected to the testing device (internal speakers, external speakers, headphones, etc), the volume is not muted and is audible, and that the desired audio playback device is set as the default device.
8. When you are done, click **Return** to return to the Site Readiness page.
  - If all of the system set-up checks succeed, you are ready to begin the Student Interface test.
  - If one or more system checks fail, adjust your configuration as needed and rerun the System Set-Up Test.
9. When the System Set-Up test is completed, click **Check Student Interface** to begin the next Site Readiness test.



Not SiteReadiness User\_15? [Exit](#)

# Hello, SiteReadiness User\_15

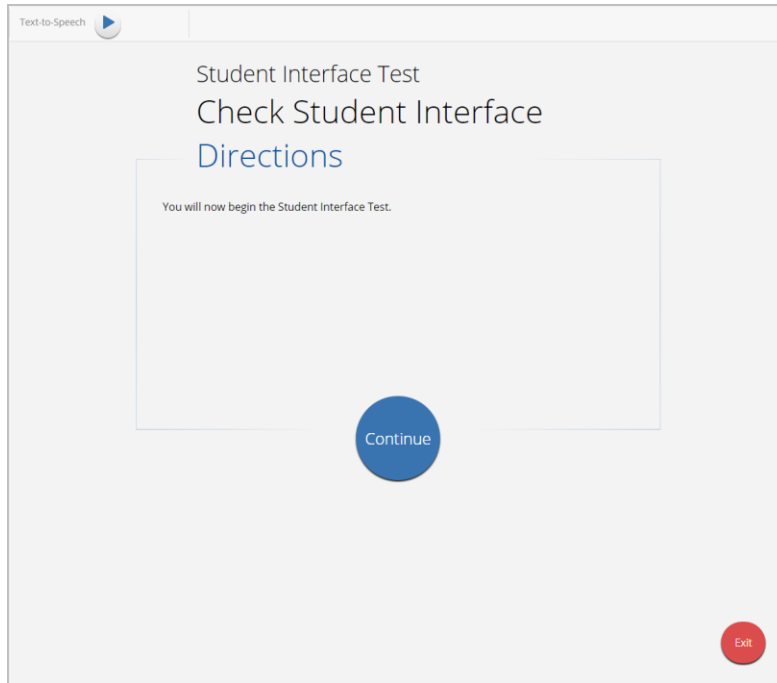
SiteReadinessStn_15 <small>State Student ID</small>	03/02/1998 <small>Date of Birth</small>	1 <small>Grade</small>
Blue Middle School <small>School Name</small>	Teacher <small>Teacher</small>	Unspecified <small>Gender</small>

The following tests have been scheduled for you:

System Set-Up Test  
[Check System Set-Up](#)

Student Interface Test  
[Check Student Interface](#)

10. Read instruction and then click **Continue** to get started.



11. Answer each of the test questions, using the navigation buttons on the right. Ensure you can effectively use text and drawing response tools.
12. After you have responded to all items, click **Finish**.

Question 5

Screen Zoom: [icon]

Text-to-Speech [icon]

**Study the information and then answer the questions.**

Meadow voles are small rodents similar to mice that are found in grassy areas. They store food and give birth to their young in underground burrows. Meadow voles usually have dark fur, but they can sometimes have white fur. Voles with white fur are called albinos. The genetic cause of the albino trait is the recessive form of a gene for fur color in voles. The dominant form of the gene codes for dark fur.

Albino voles are typically rare and usually have low survival rates in the population. Scientists recorded the distribution of fur color traits in a vole population in one particular habitat, as shown in the graph.

**Fur Color Distribution in a Vole Population**

Fur Color Trait	Percentage of Population
Dark	60%
Albino	40%

Because the data were not what the scientists expected, they decided to investigate how genetic and environmental factors affect trait distribution in the vole population.

Although the environment plays a role in determining the distribution of the fur color trait in the vole population, the percentages of albino voles and voles with dark fur are also influenced by the mating patterns of the voles.

**Match each vole cross to its likely outcome to show the expected percentages of offspring with each fur color.** To connect a cross and outcome, click the cross and then the outcome, and a line will automatically be drawn between them. To remove a connection, hold the pointer over the line until it turns red, and then click it. You may connect each outcome to more than one vole cross.

Vole cross	Outcome
AA x AA	50% dark fur and 50% albino fur
Aa x aa	100% of offspring with dark fur
AA x aa	100% of offspring with albino fur
aa x aa	

Clear Pause Test Back Finish

13. When you are ready to submit the test, click **Turn In** to continue or click **Return to test** to return to the Test Review page.

You have completed: **5** out of **5** question(s).

1 answered

2 answered

3 answered

4 answered

5 answered

Pause Test

Return to test

Turn In

If you click **Turn In**, you return to the Session Selection page, where the test session is grayed out.

Not SiteReadiness User\_15 Exit

# Hello, SiteReadiness User\_15

SiteReadinessStn_15 State Student ID	03/02/1998 Date of Birth	1 Grade
Blue Middle School School Name	Teacher	Unspecified Gender

The following tests have been scheduled for you:

System Set-Up Test

Check System Set-Up

Student Interface Test

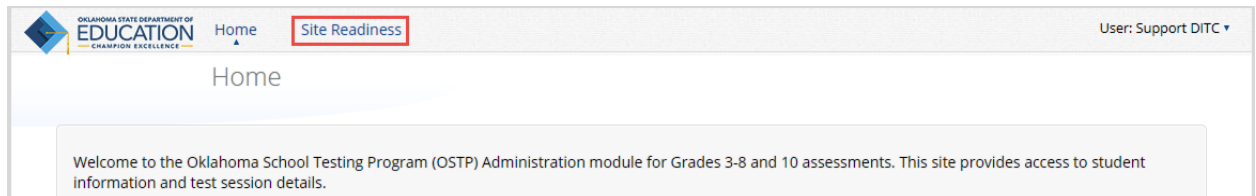
Check Student Interface

14. Click **Exit** in the top-right corner of the page.

## Site Certification

After all devices or device configurations have successfully completed the Site Readiness test, the Assessment Technology Coordinator must certify the site for testing.

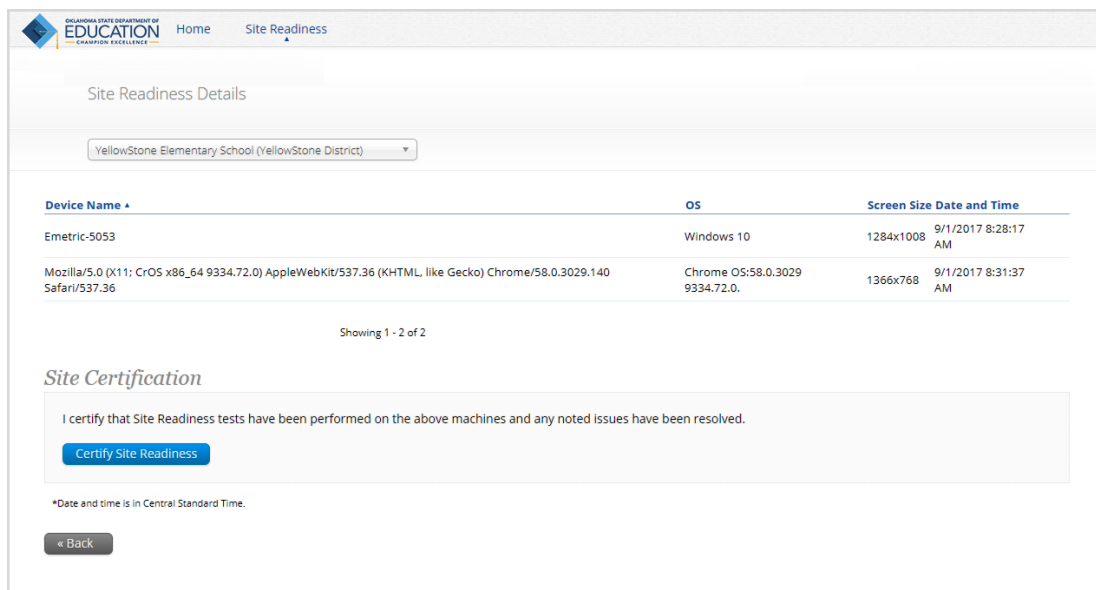
1. Go to the OSTP Portal at <https://oklahoma.measuredprogress.org> and log in with your user name and password.
2. Click **Administration**.
3. Click **Site Readiness** at the top of the page.



4. On the Site Setup page, locate the building to be certified, and then click **View Details**



The Site Details page appears.



5. Verify that all of the devices for this building have successfully taken the Site Readiness Test.
6. In the Site Certification section, click **Certify Site Readiness**, and click **Yes** to confirm.


### Site Certification

I certify that Site Readiness tests have been performed on the above machines and any noted issues have been resolved.

**Certify Site Readiness**

\*Date and time is in Central Standard Time.

The **Site Certification** section updates with the date and time when the site was certified and user name of the user who certified the site for testing.

<div>  <a href="#">Home</a> <a href="#">Site Readiness</a> </div>				
Site Readiness				
YellowStone Elementary School (YellowStone District)				
School	Number of Devices Tested	Date and Time	Certified By	
YellowStone Elementary School	2	9/1/2017 8:40:41 AM	emetric-support	<a href="#">View Details</a>
Showing 1 - 1 of 1				
<small>*Date and time is in Central Standard Time.</small>				